

**Trader's Expo 2012**  
**Caesar's Palace, Las Vegas**  
**November 16, 2012**

# **Ride in the Cockpit with The O'Neil Disciples Handouts**

**Chris Kacher & Gil Morales**  
**Managing Directors**  
**MoKa Investors, LLC & Virtue of Selfish Investing, LLC**  
[www.mokainvestors.com](http://www.mokainvestors.com)  
[www.selfishinvesting.com](http://www.selfishinvesting.com)

# Chart Notes

## Daily Moving Averages:

**Magenta** = 10-day simple moving average.

**Blue** = 50-day simple moving average.

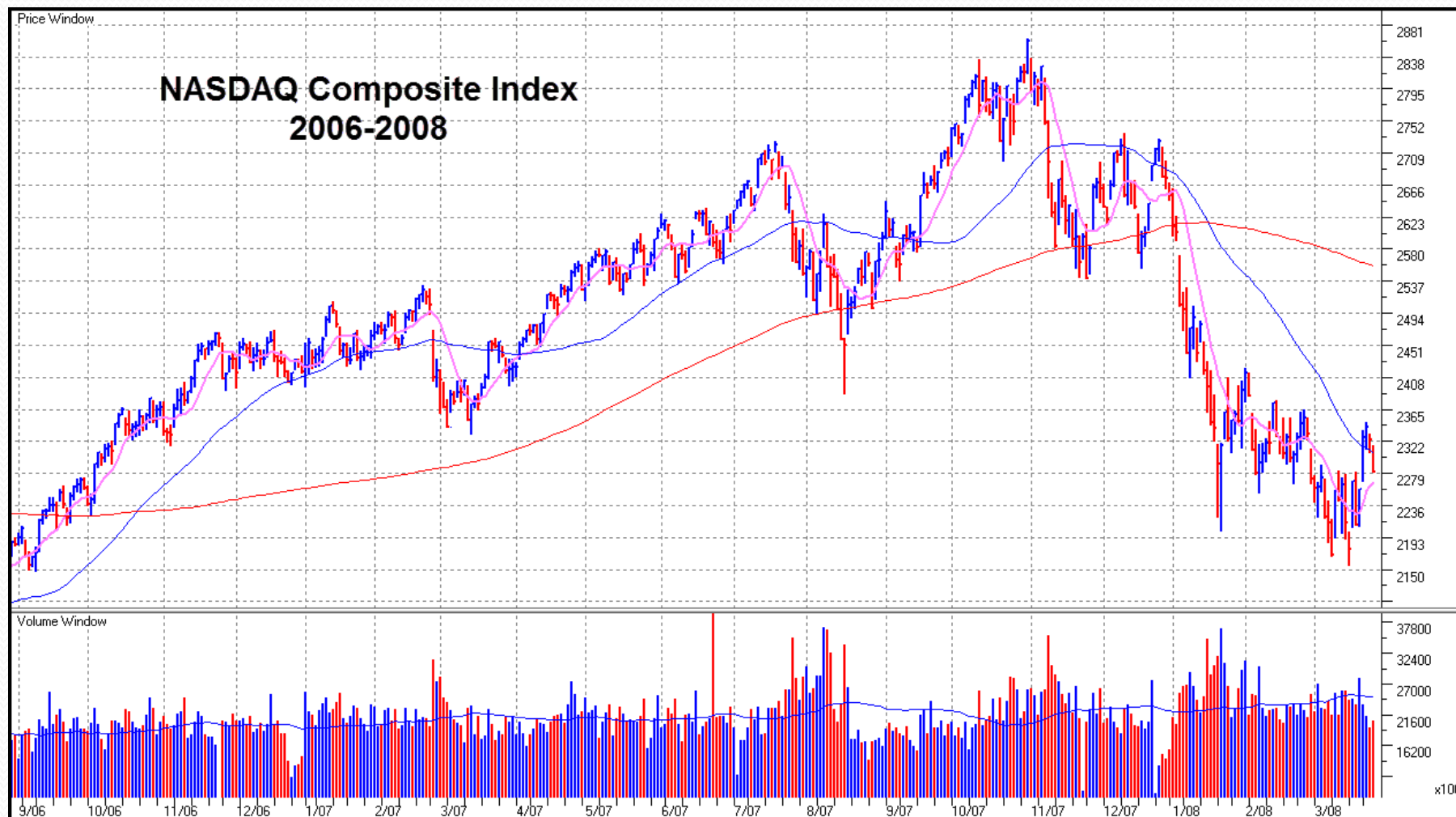
**Red** = 200-day simple moving average.

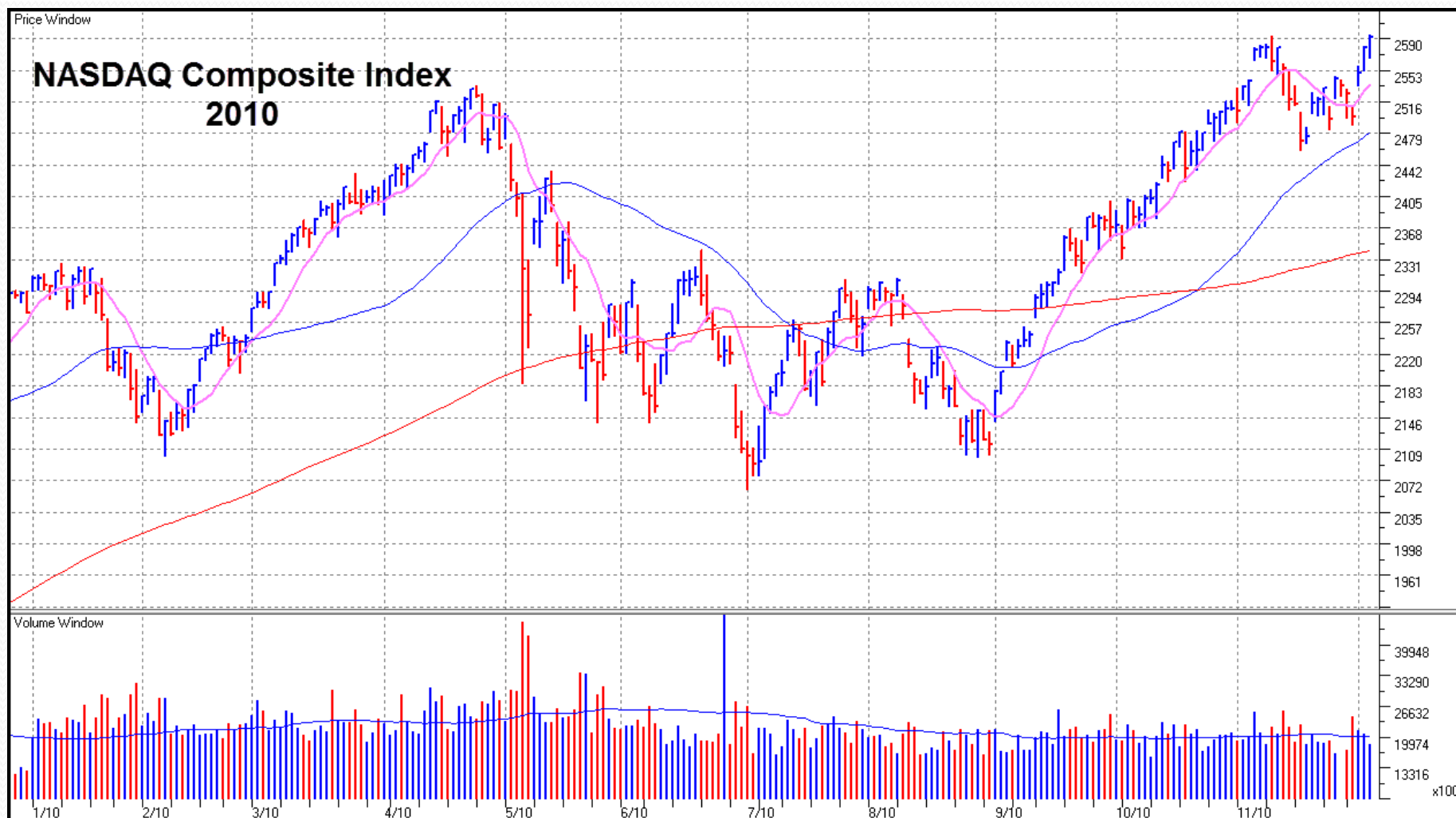
## Weekly Moving Averages:

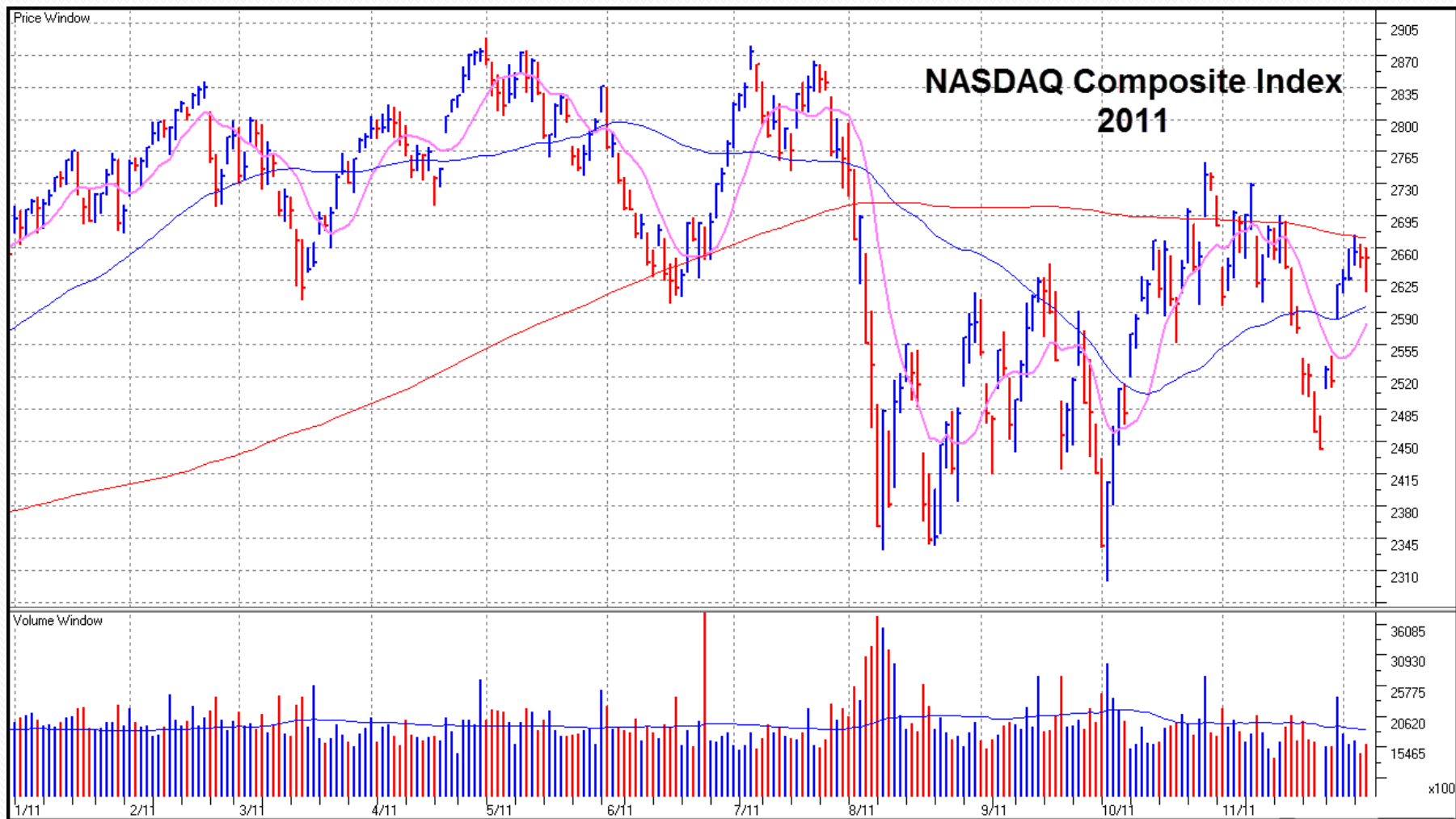
**Blue** = 10-week simple moving average.

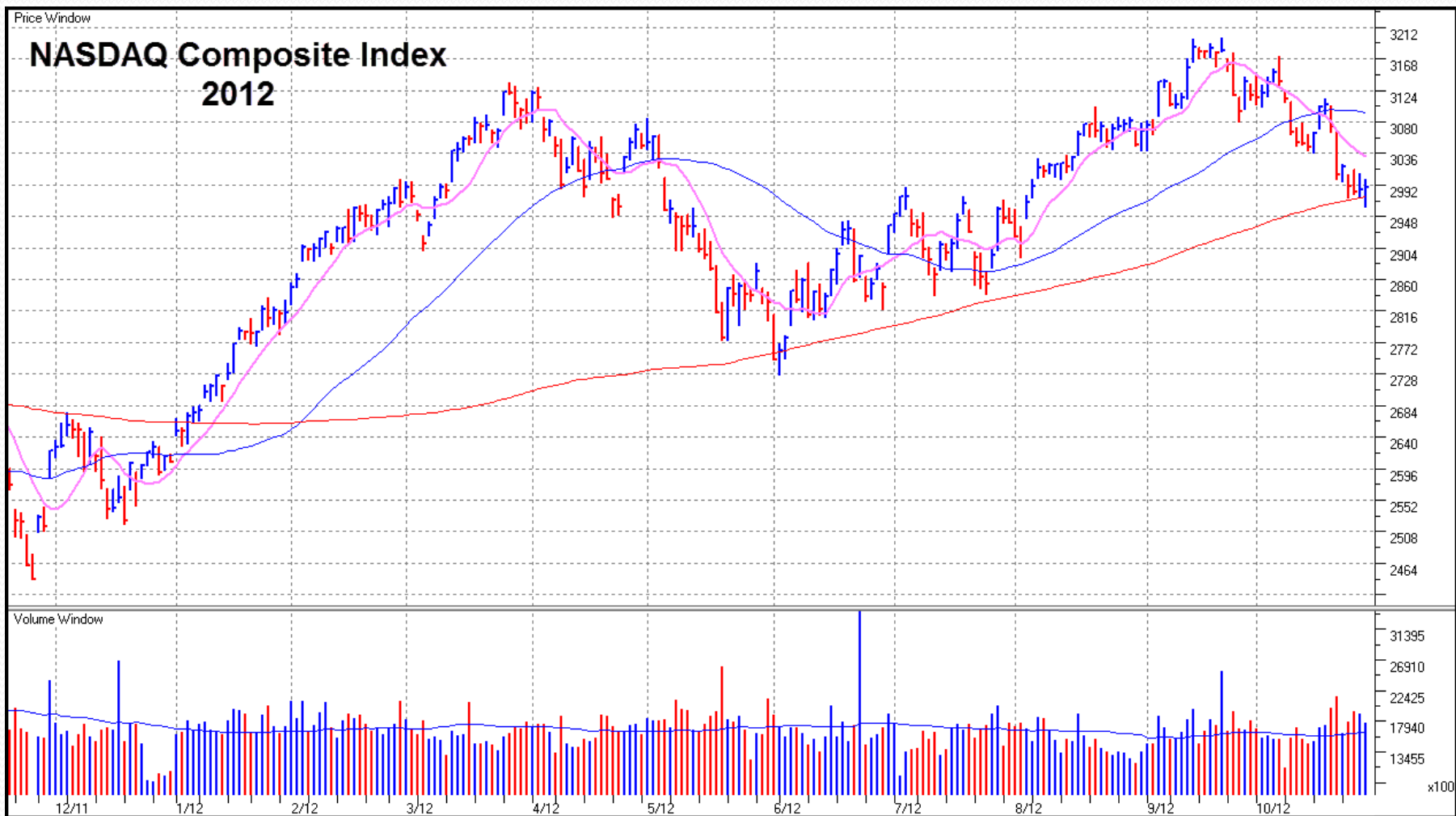
**Red** = 40-week simple moving average.

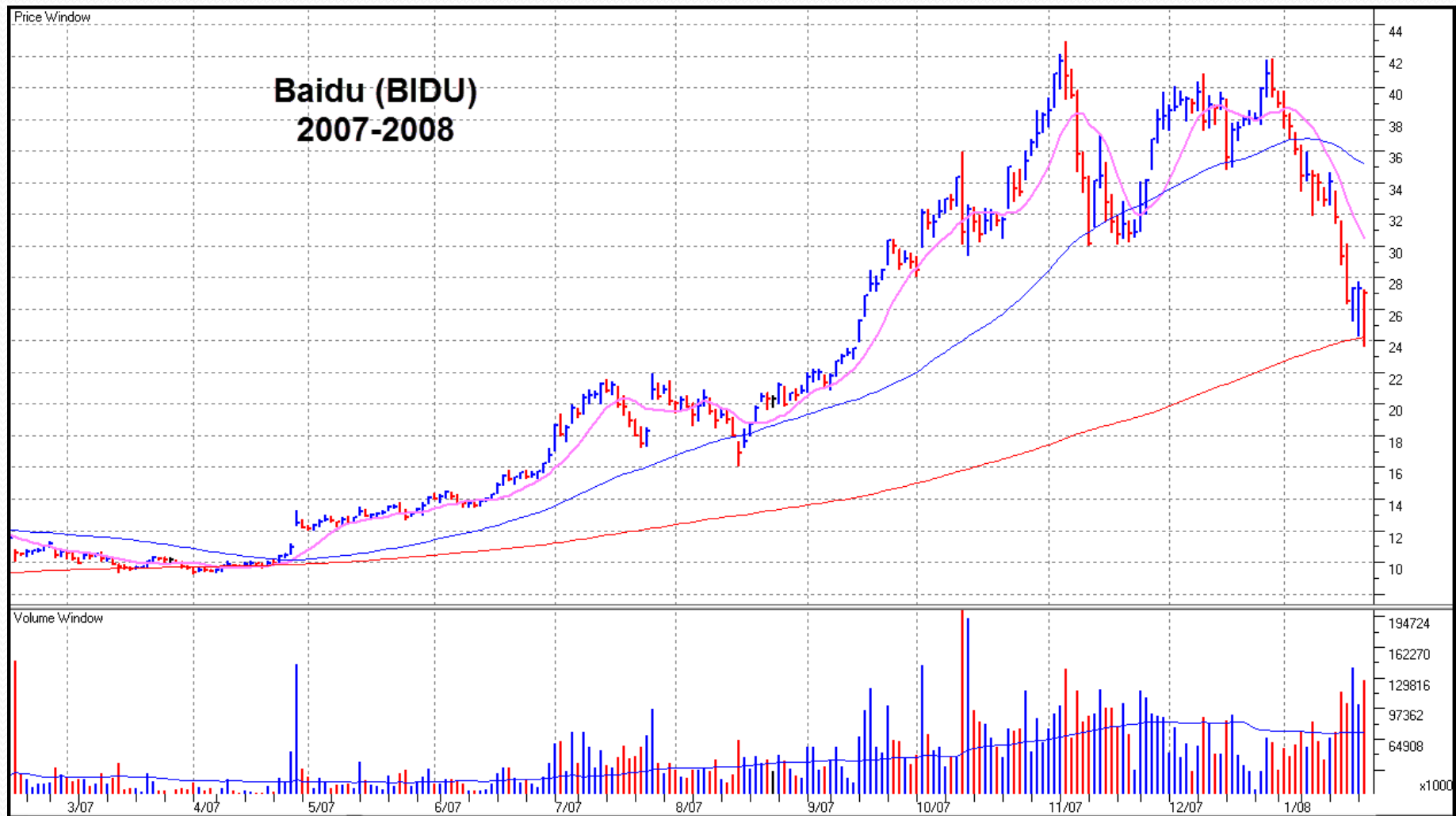
All charts courtesy of  
HighGrowthStock Investor and eSignal, Inc.  
©2012, all rights reserved, used by permission.

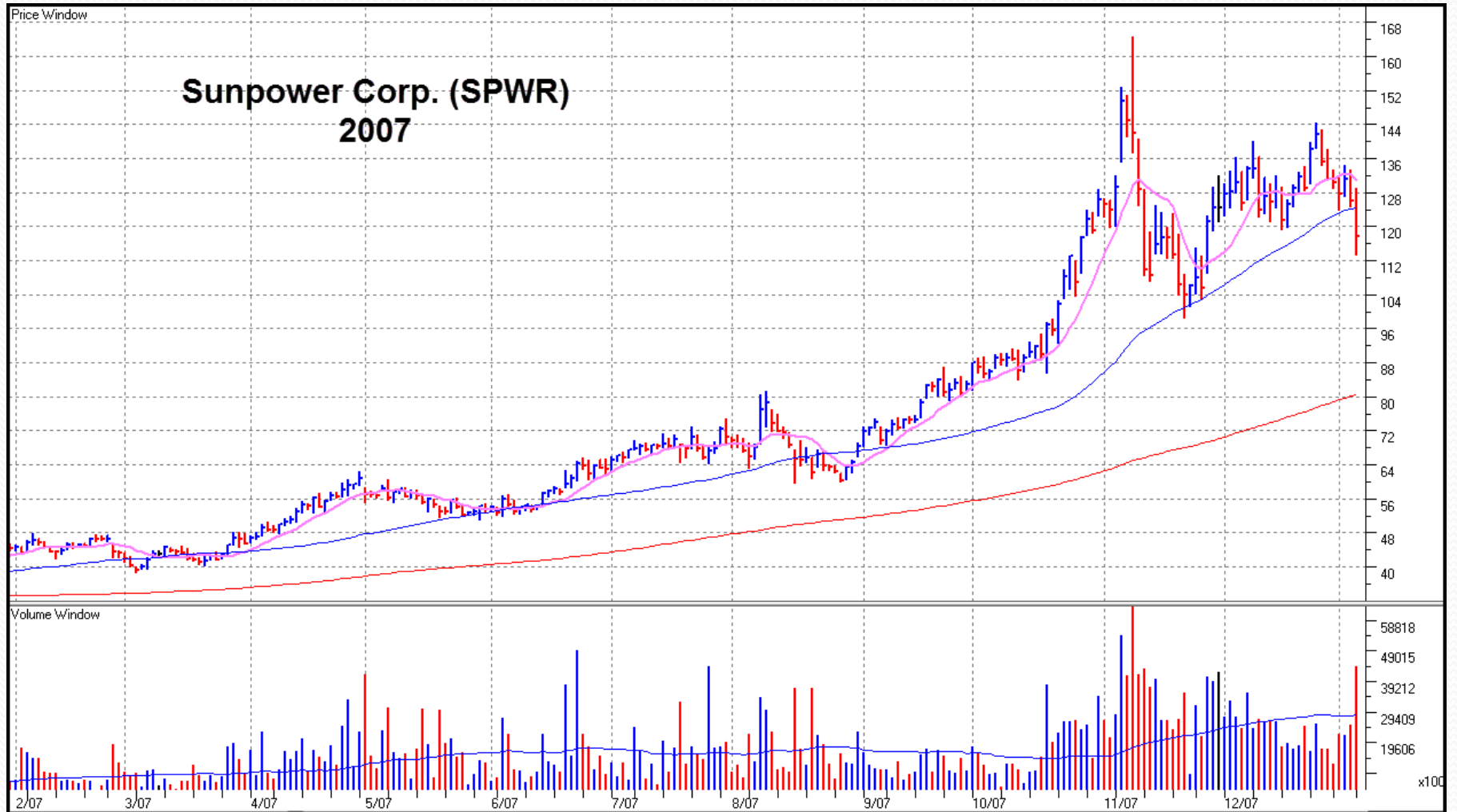




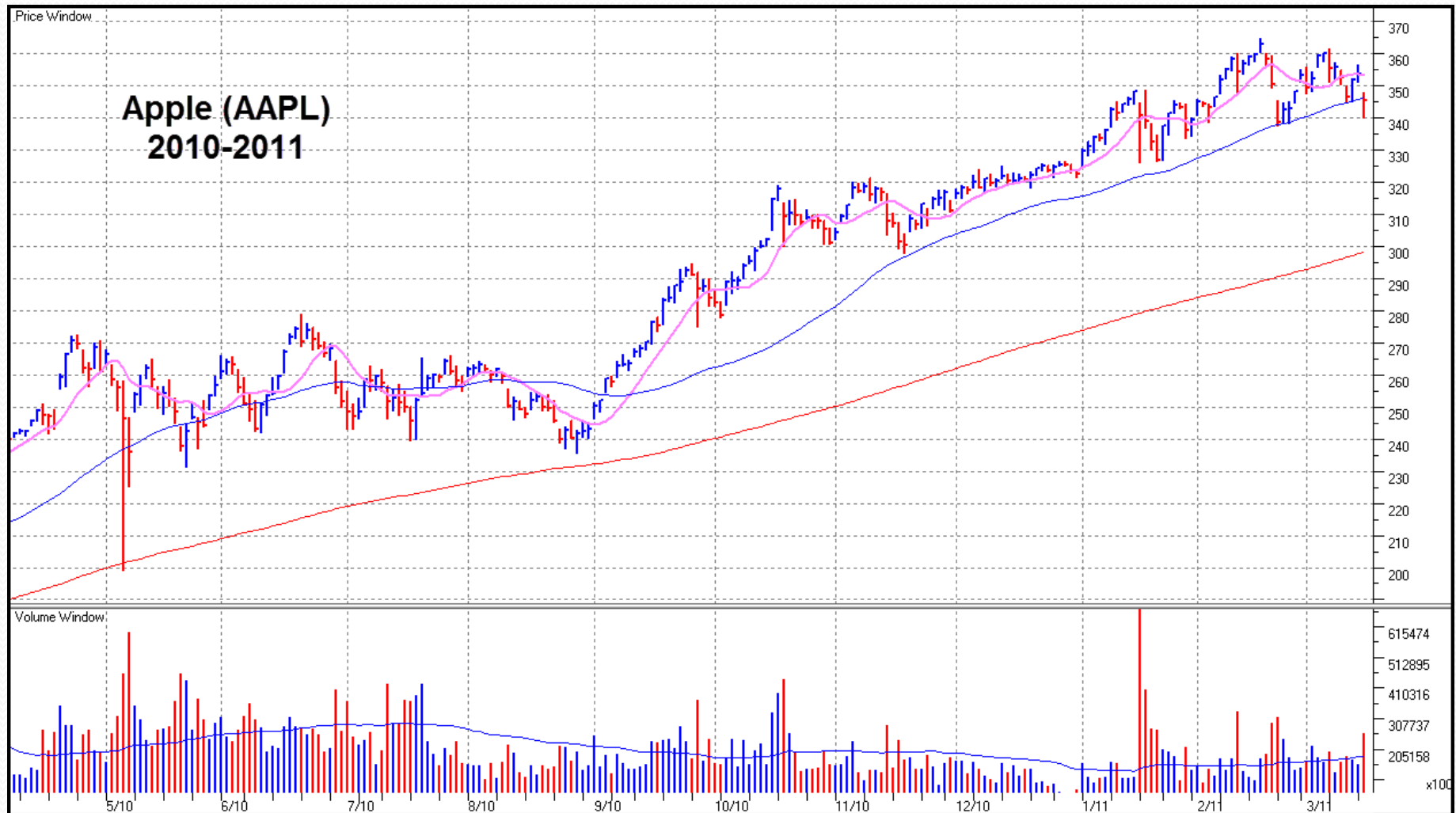


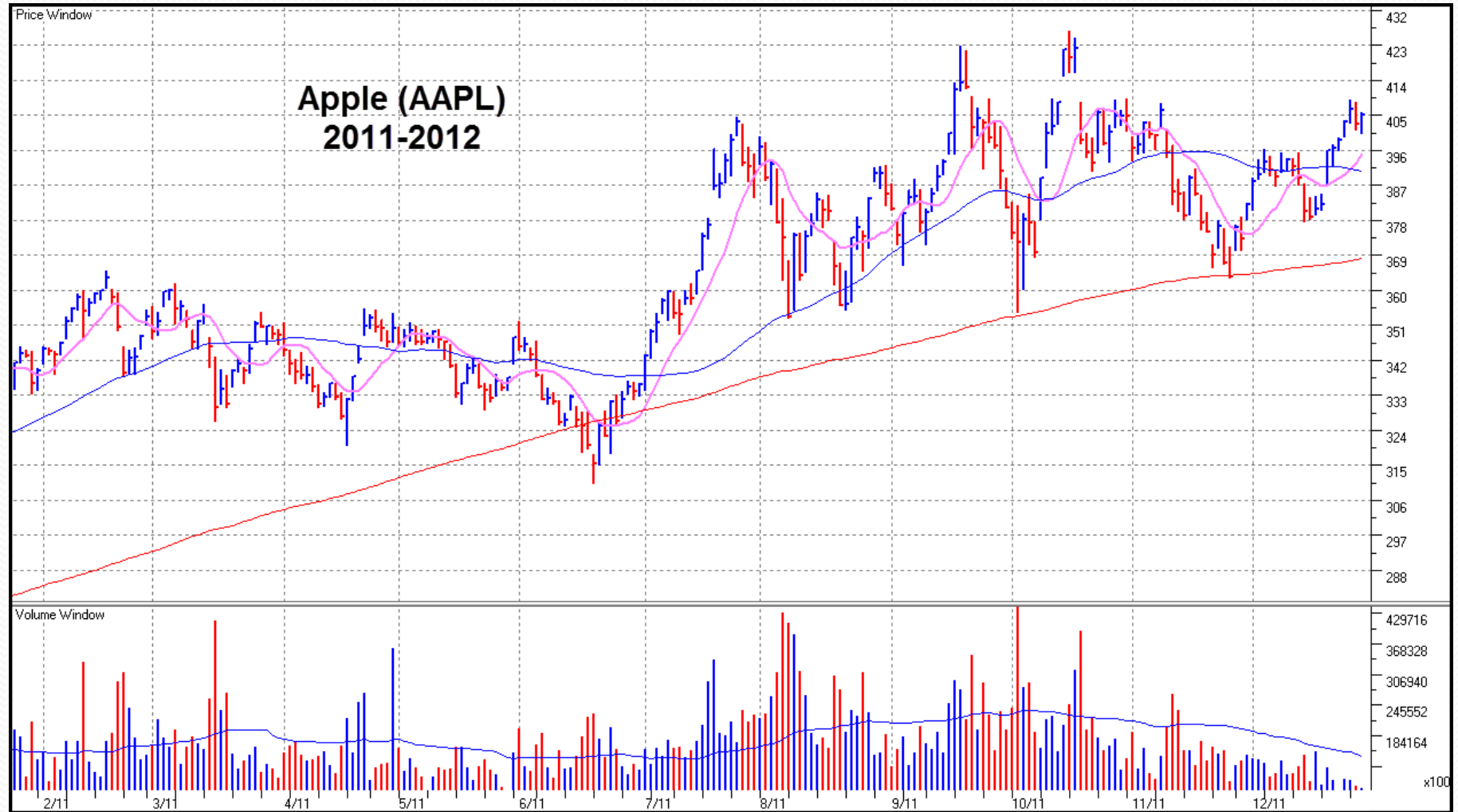


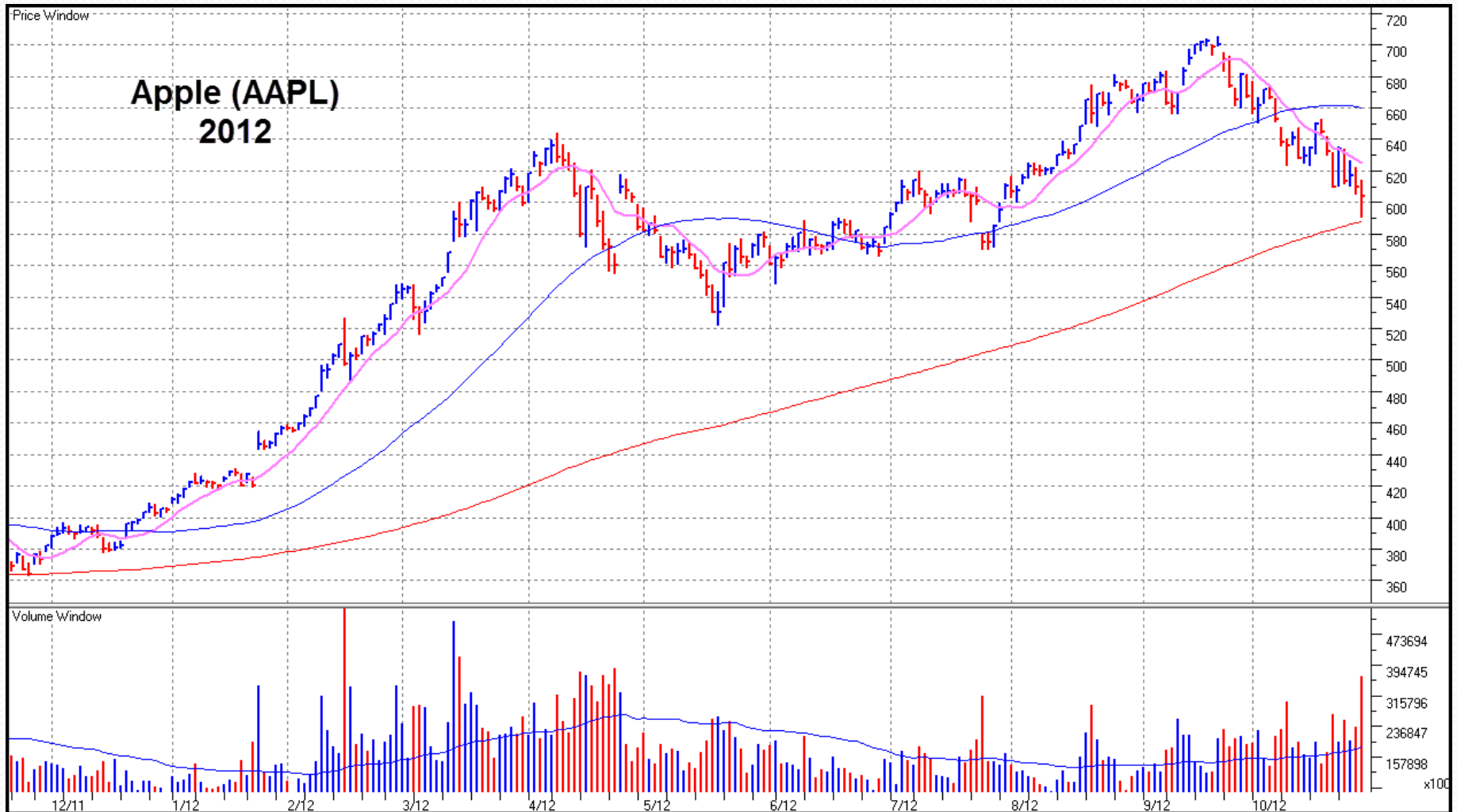


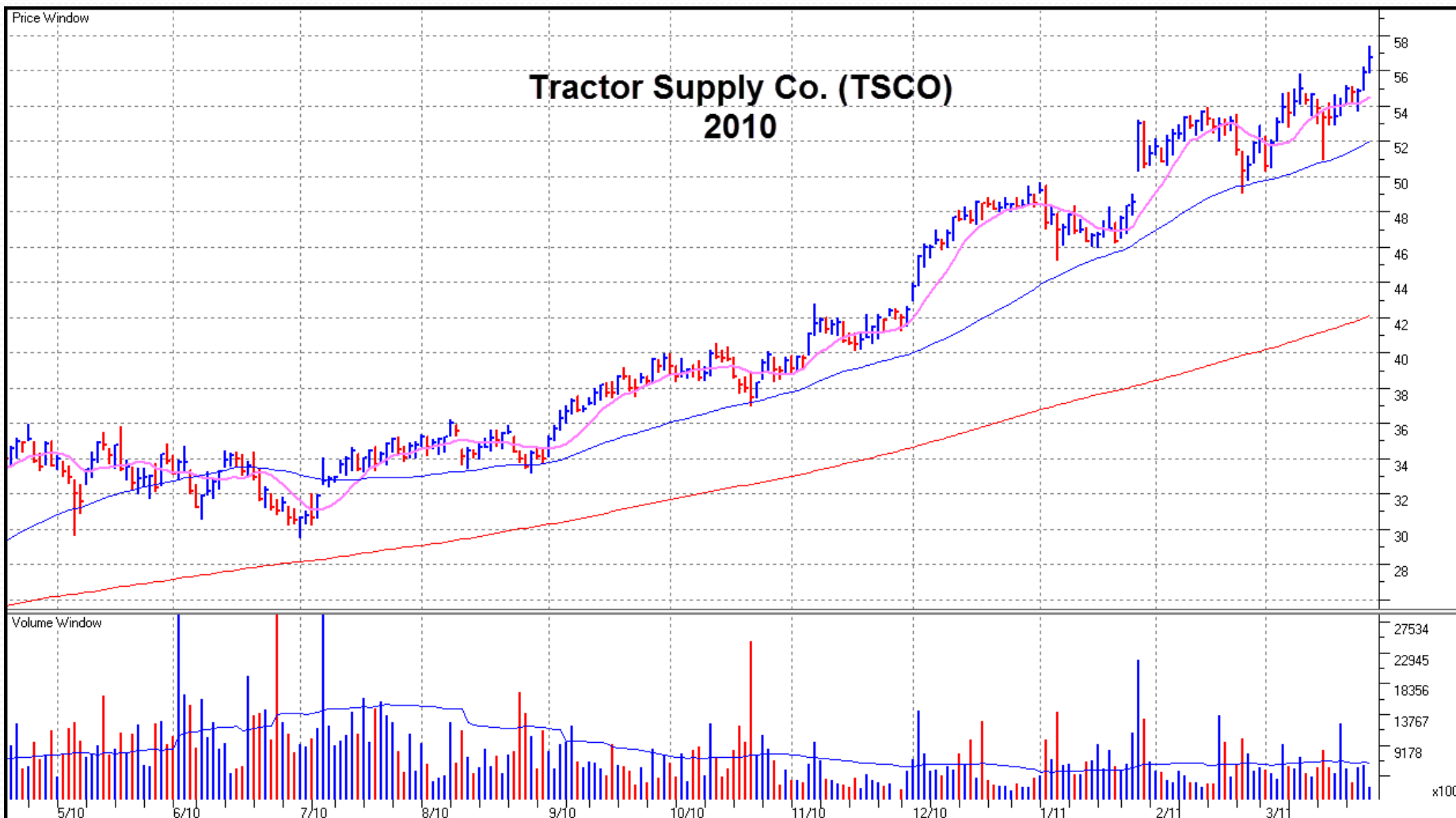










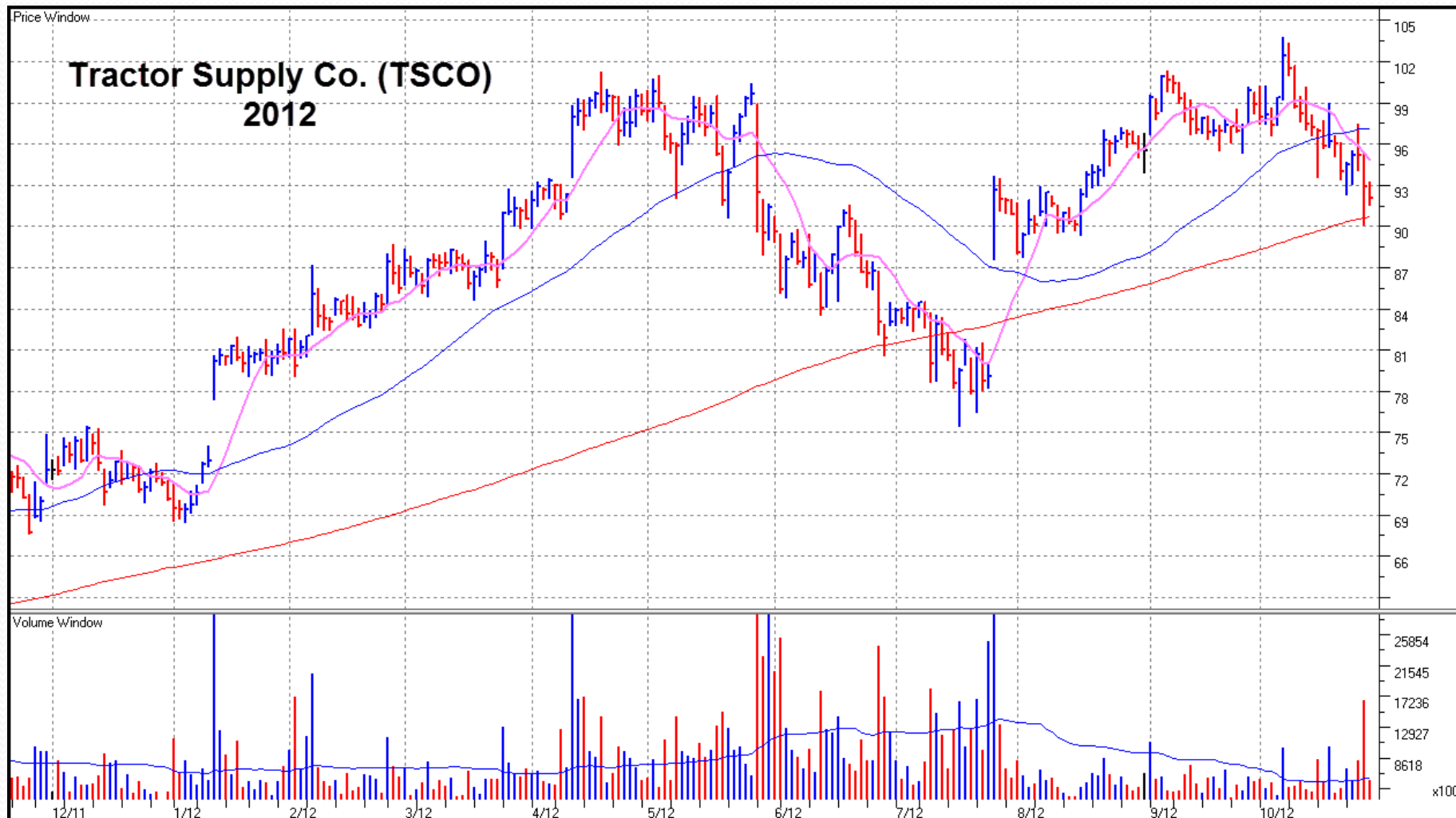


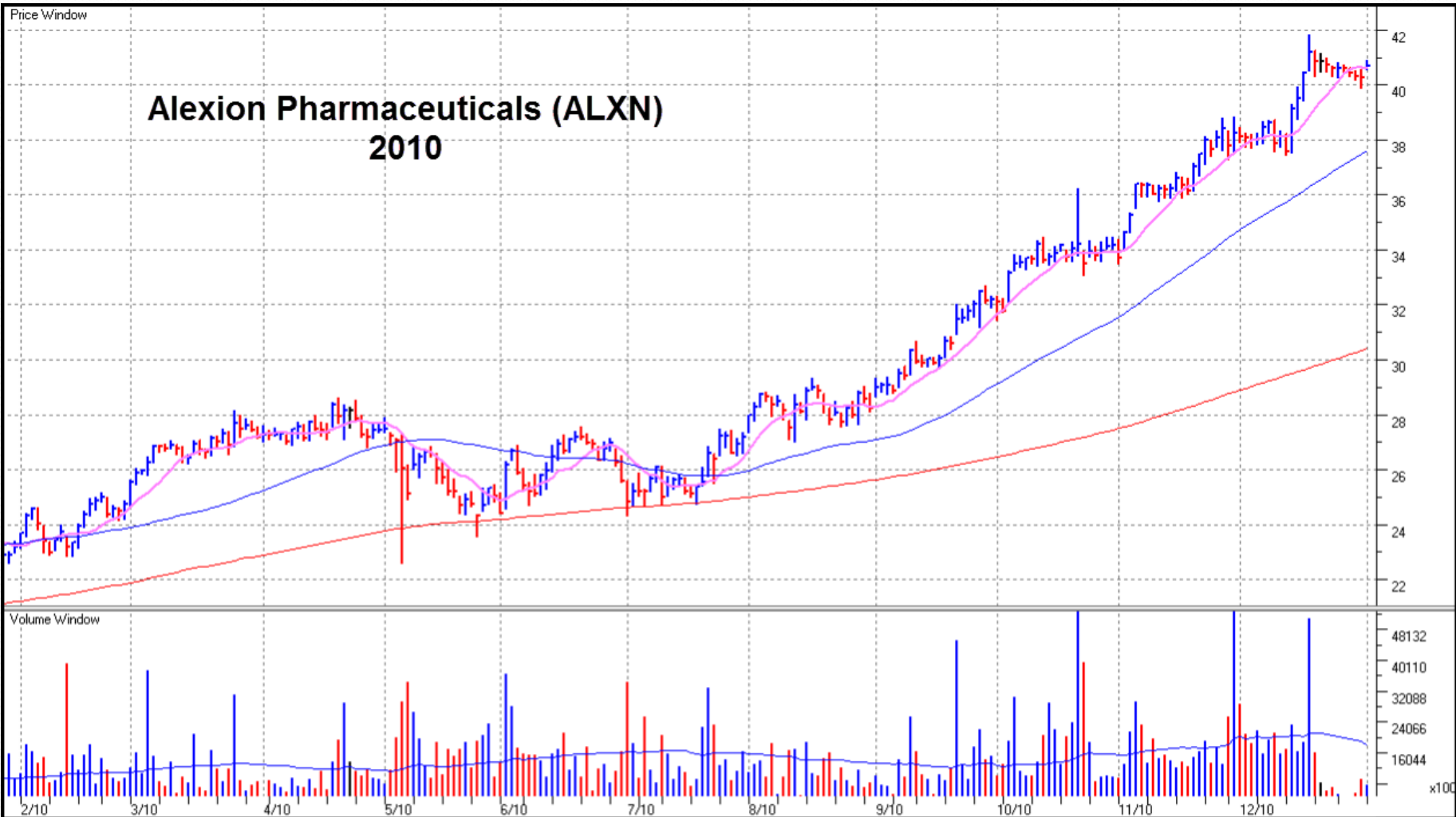
**Tractor Supply Co. (TSCO)**  
**2011**

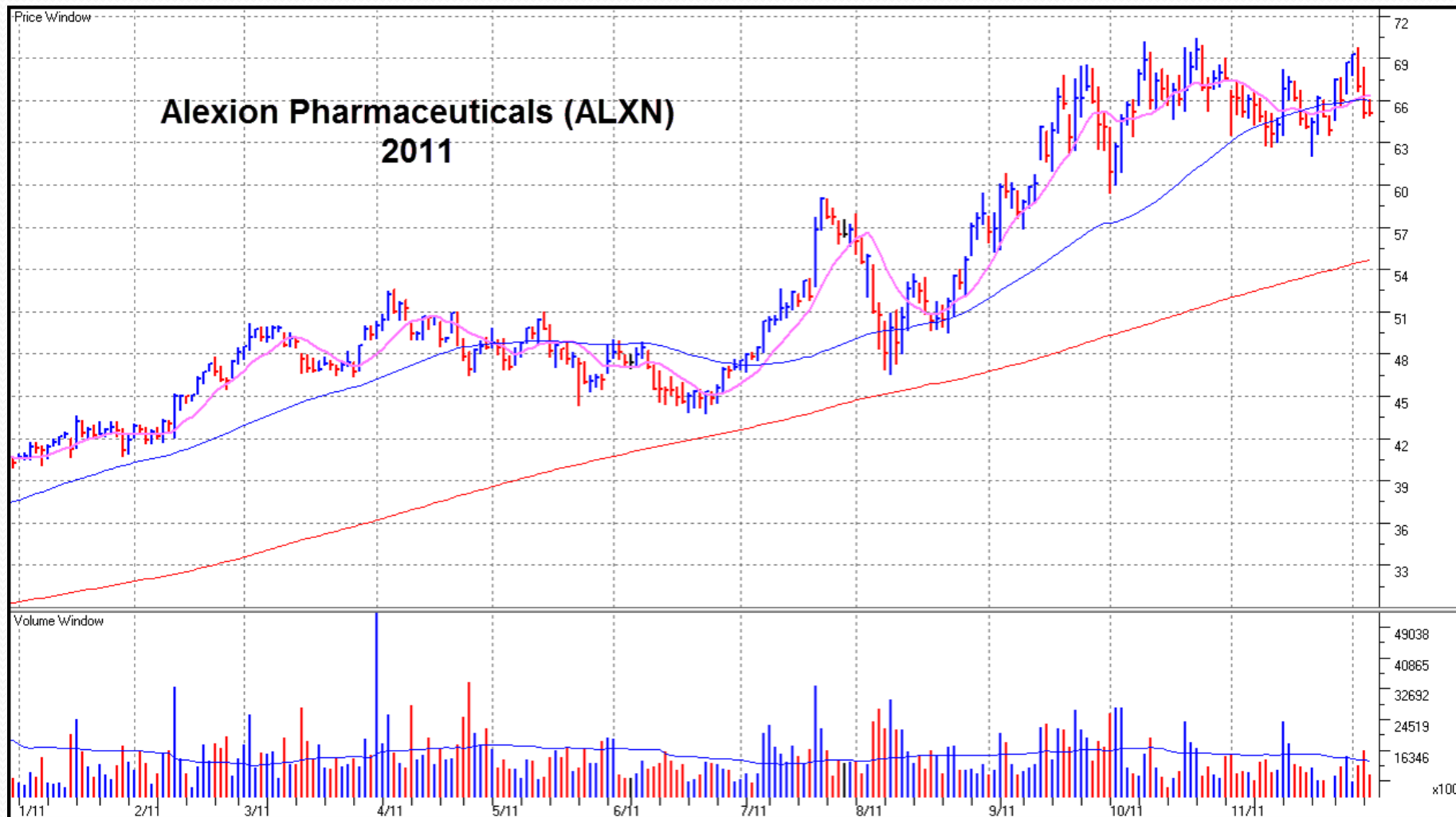
Price Window

Volume Window

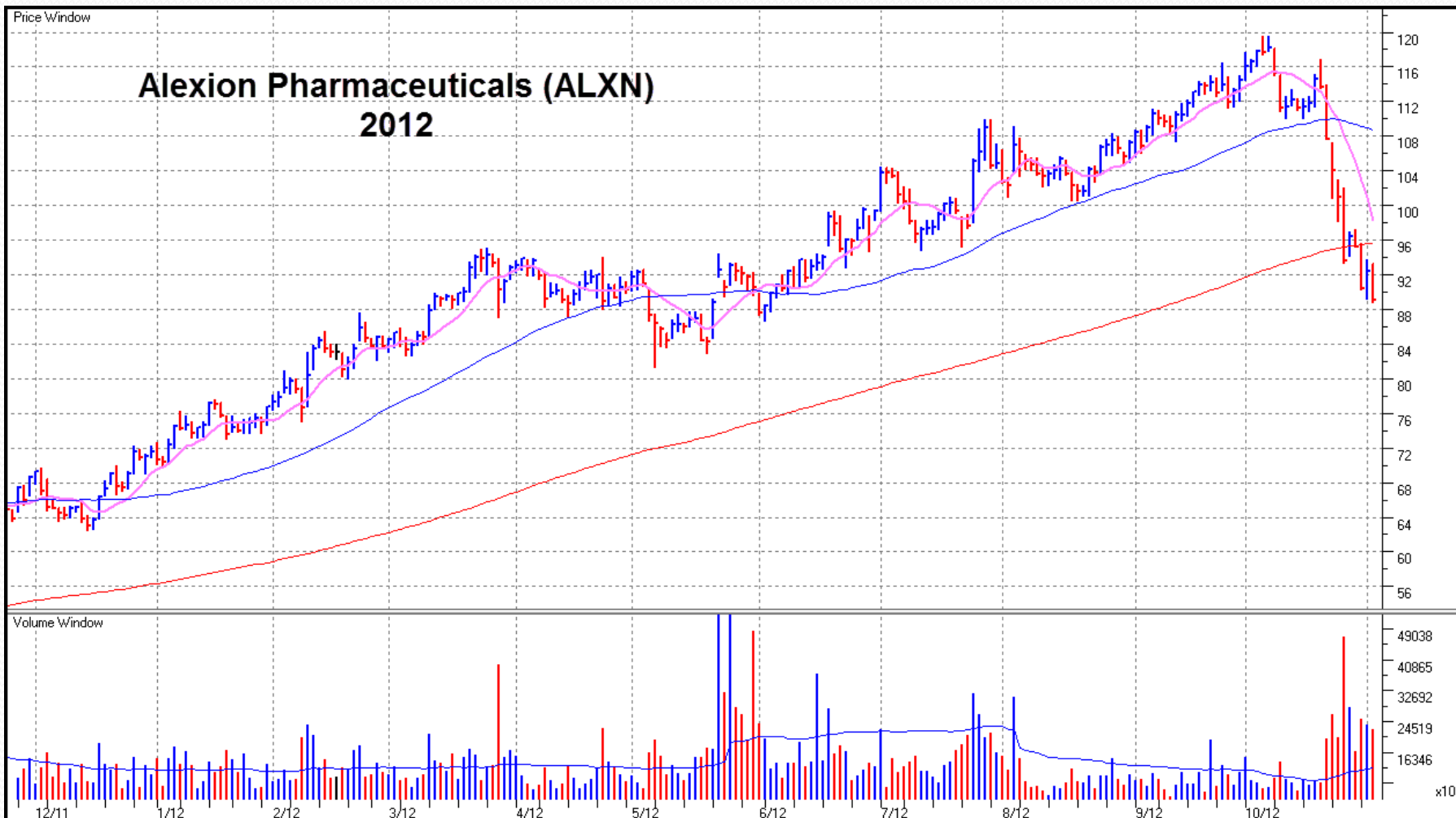
x100

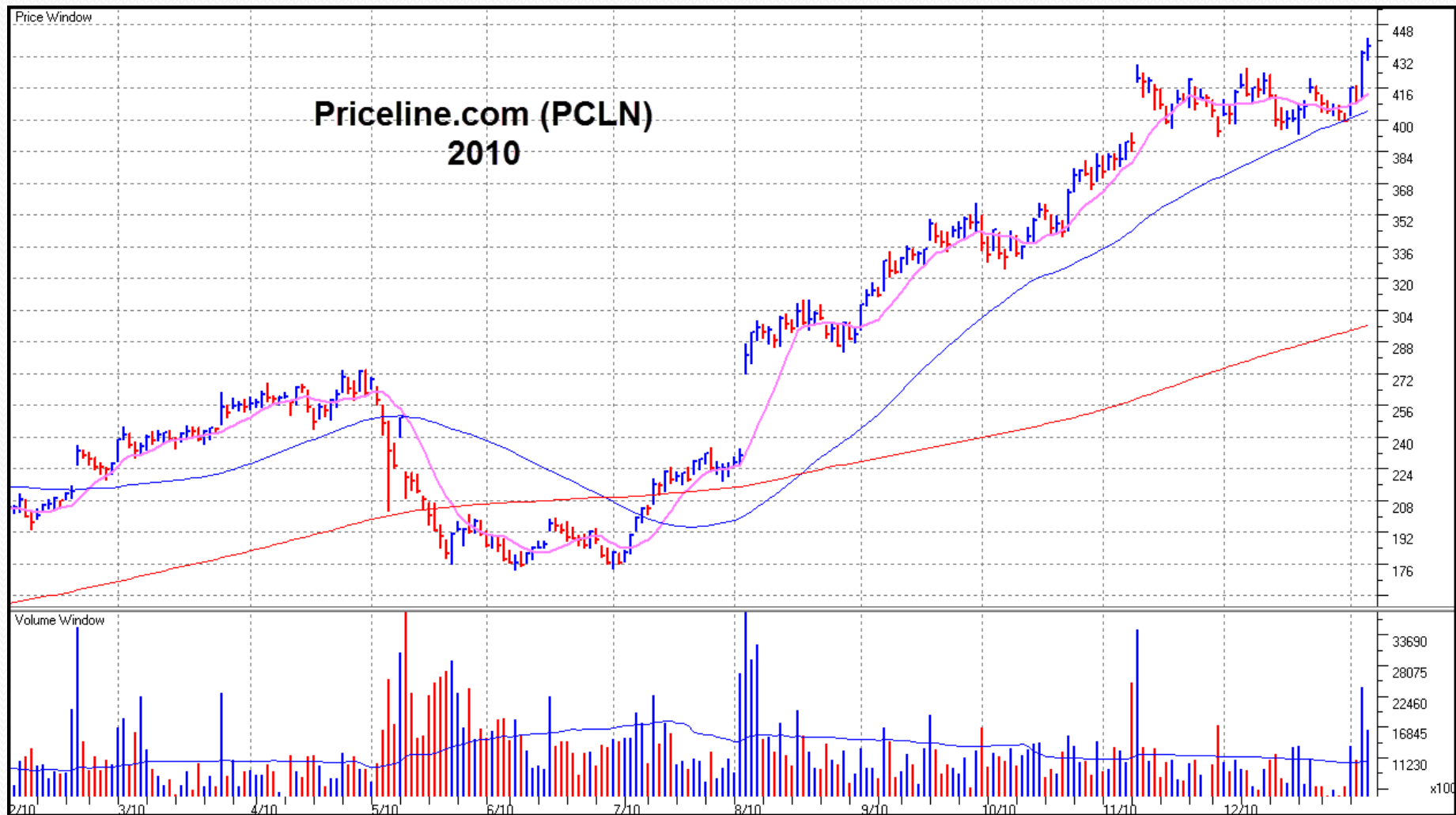


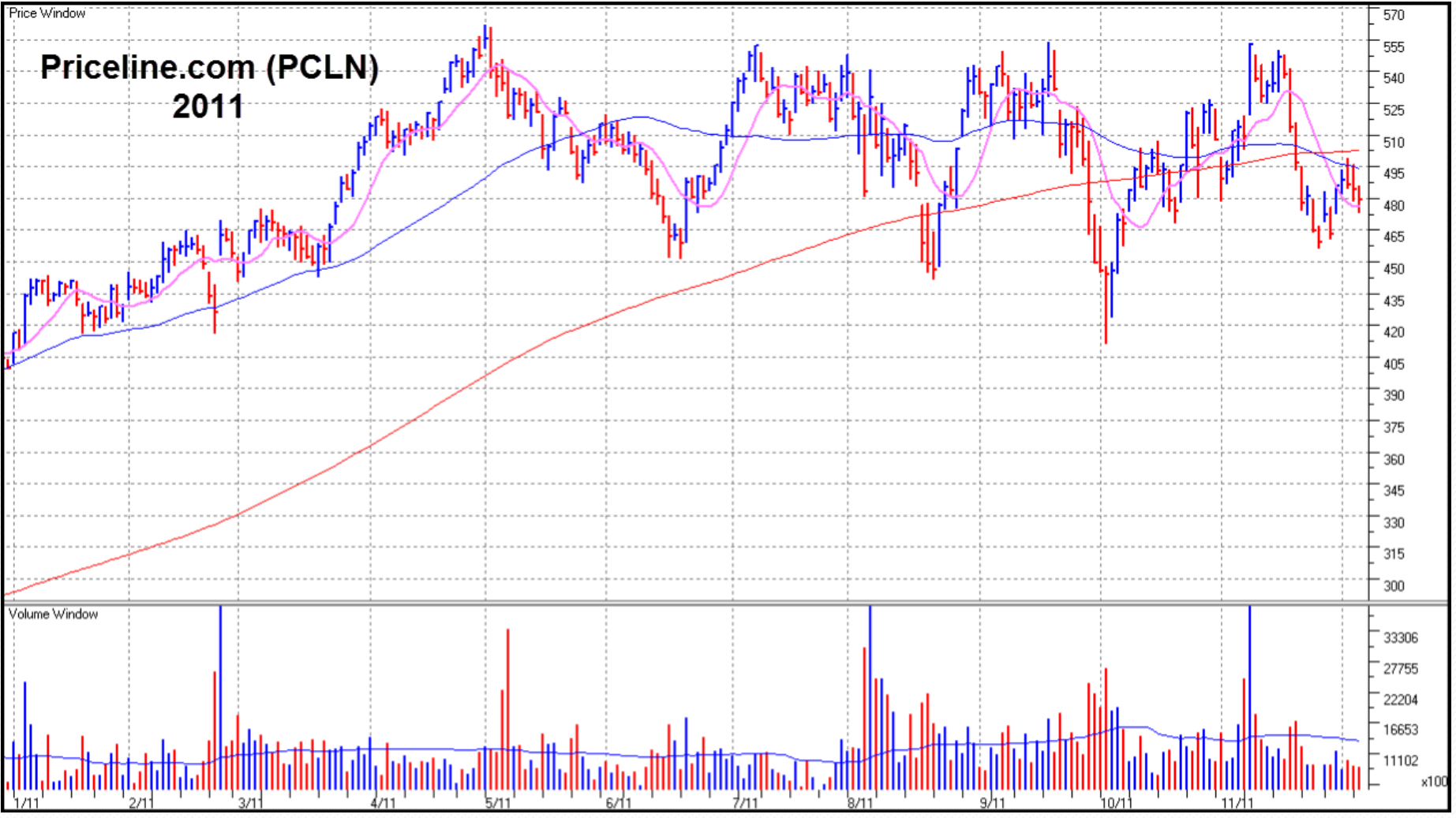


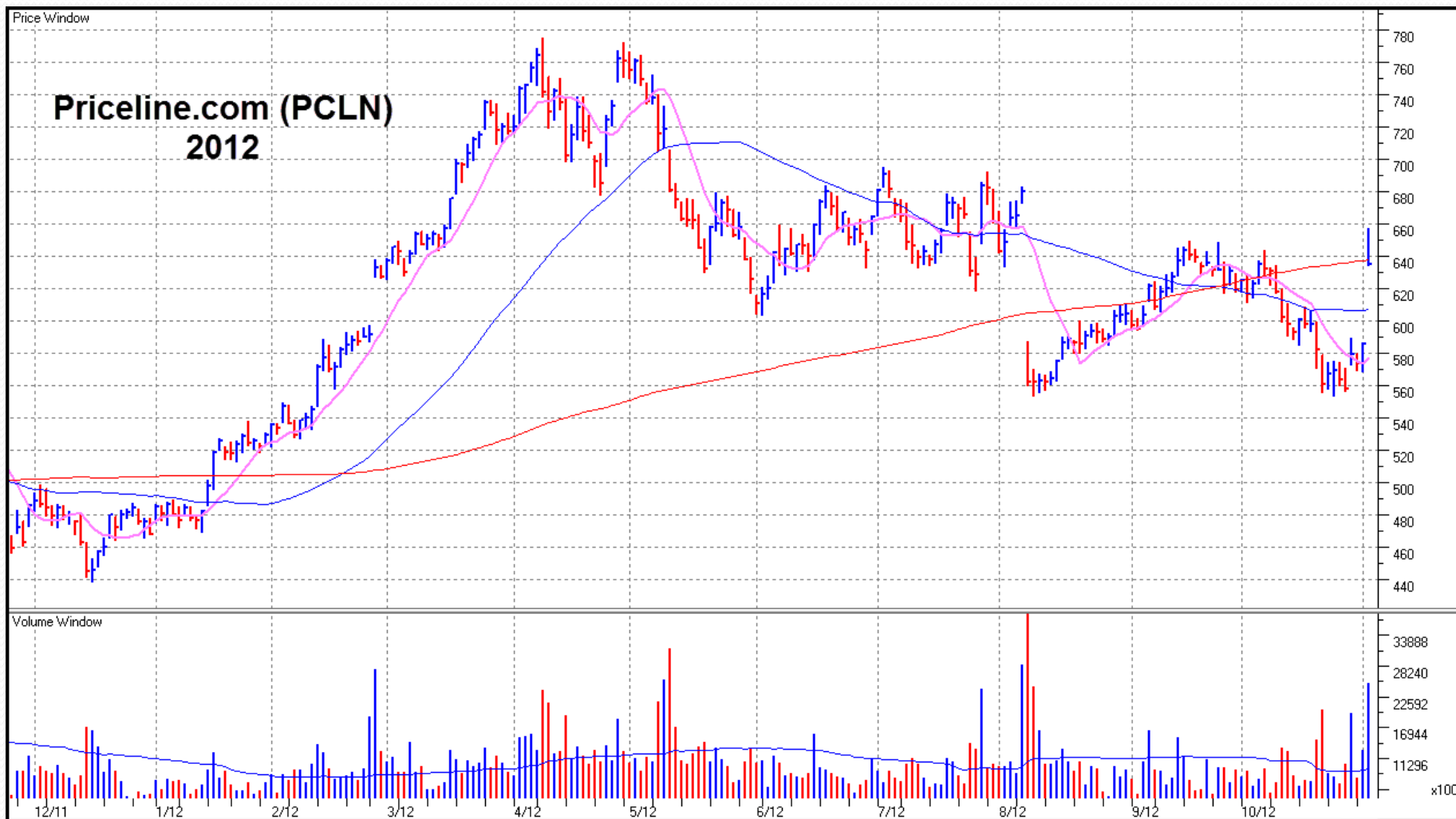


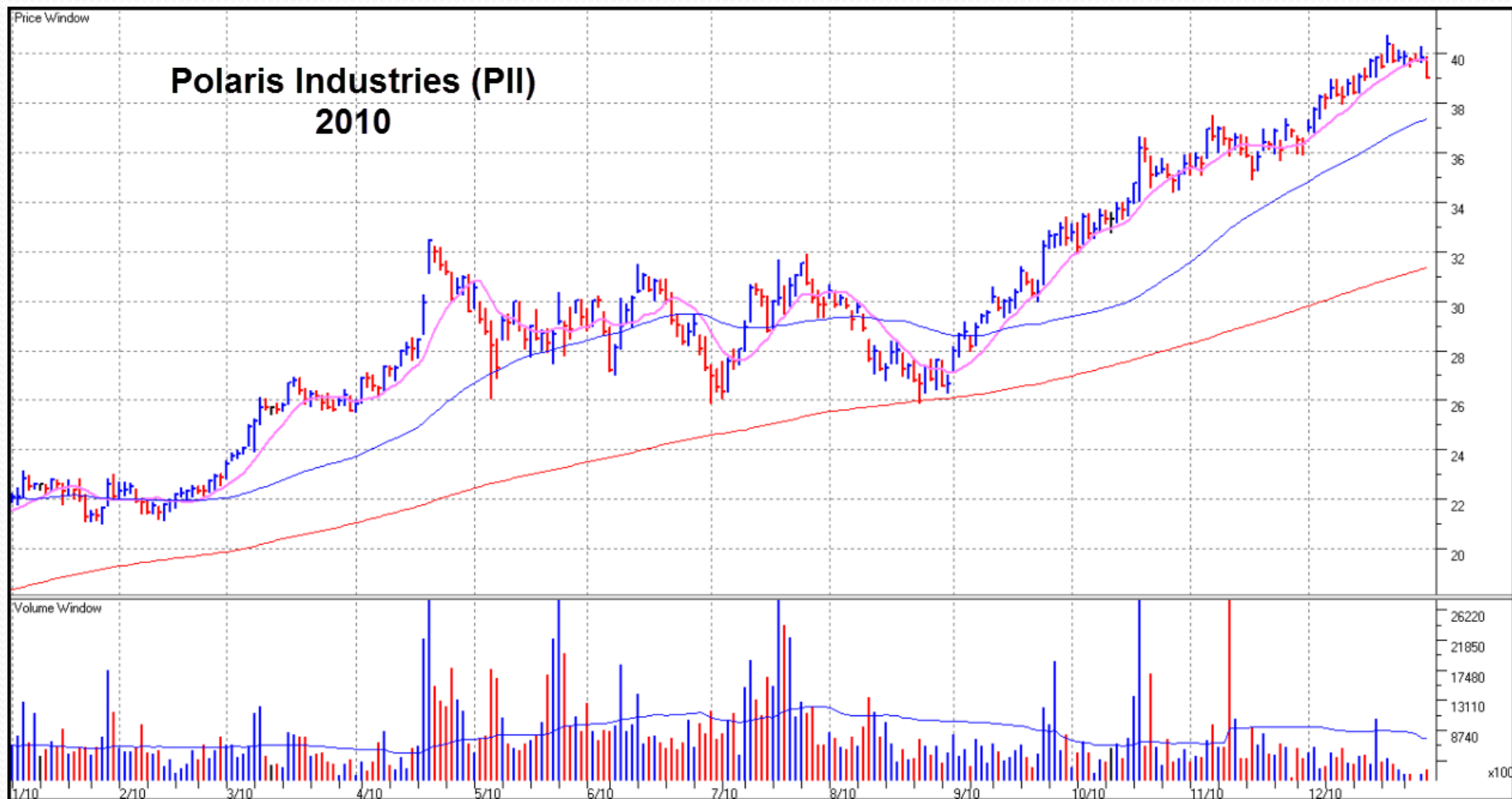




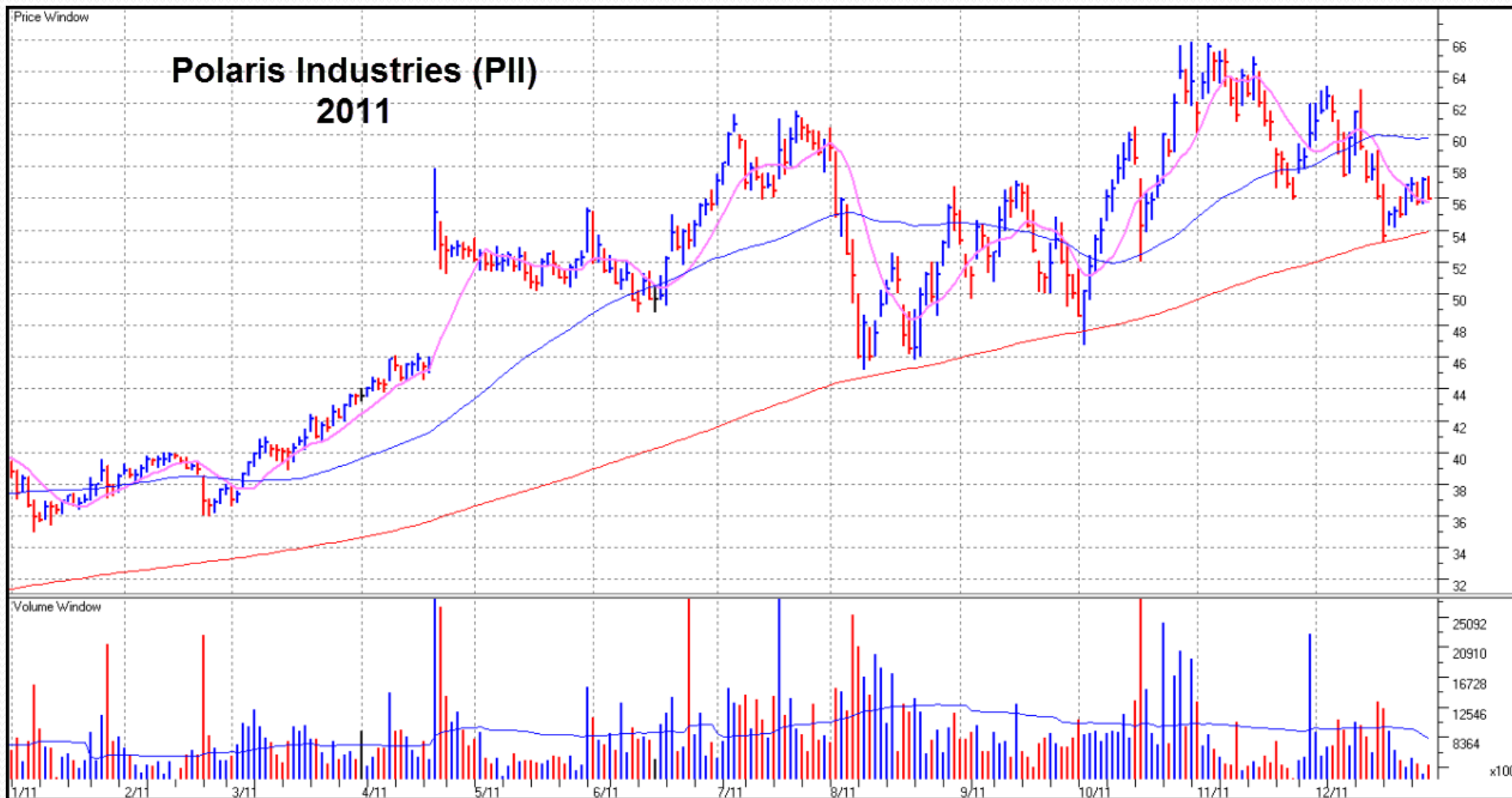


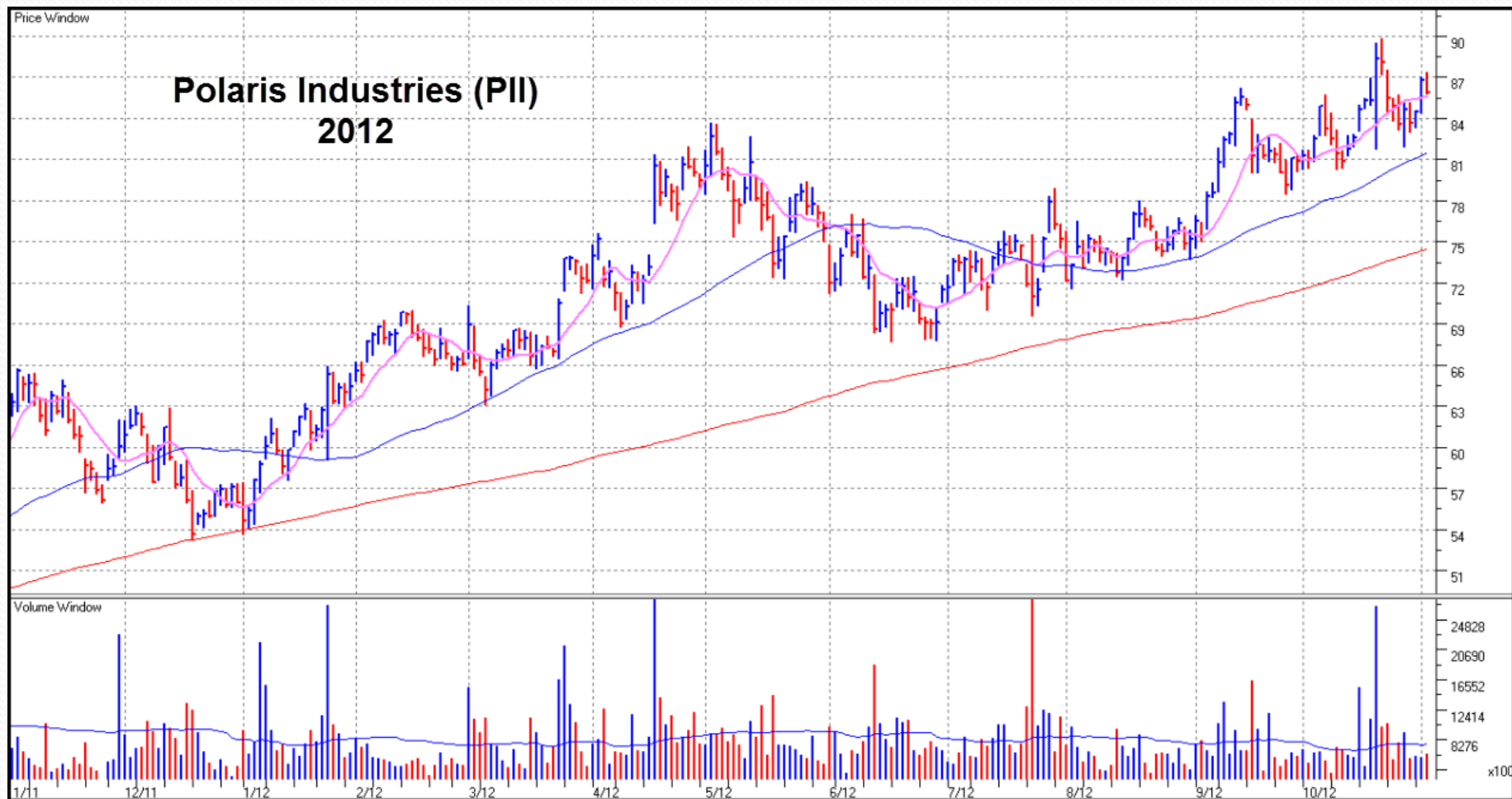




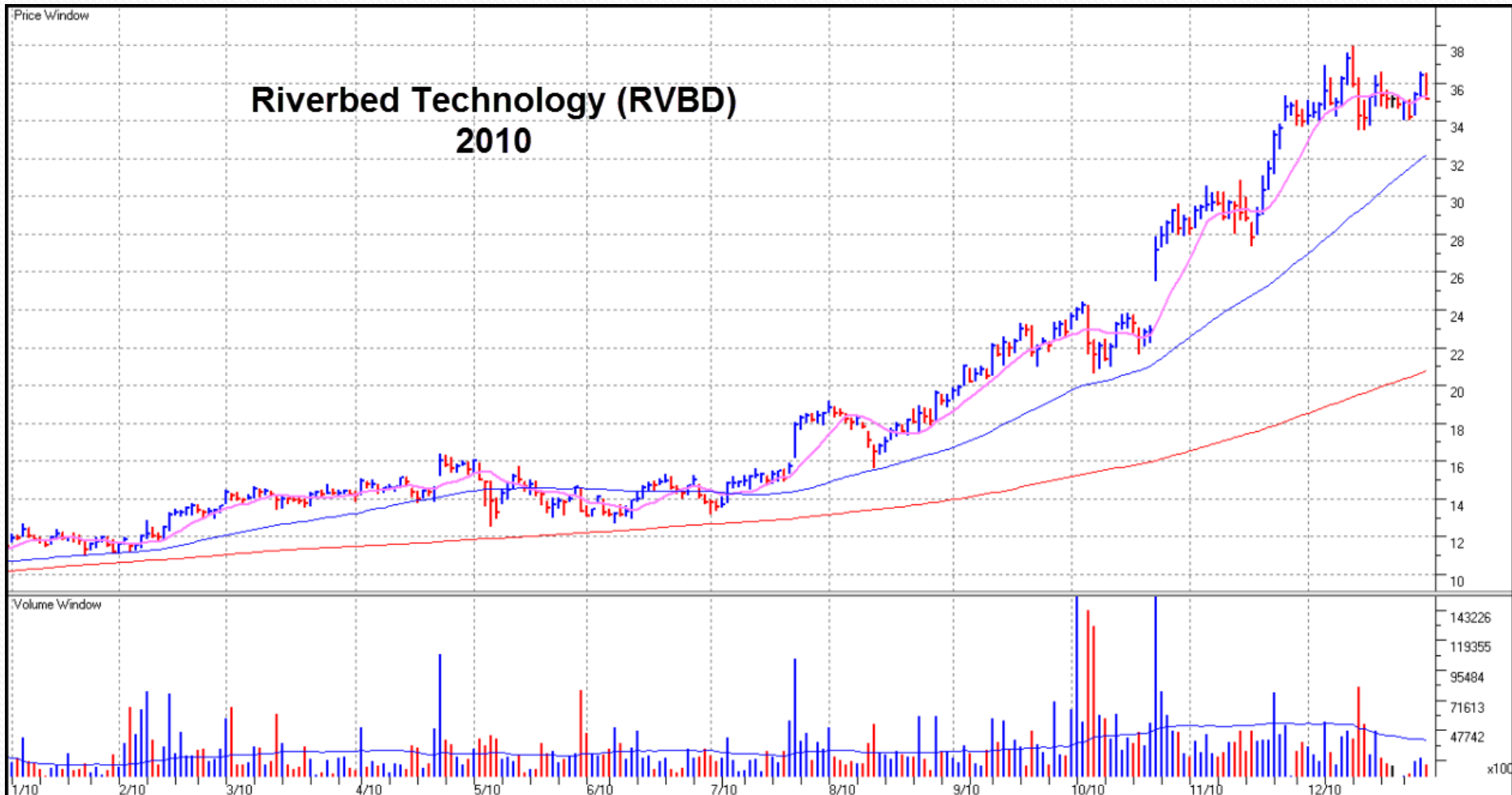


# Polaris Industries (PII) 2011

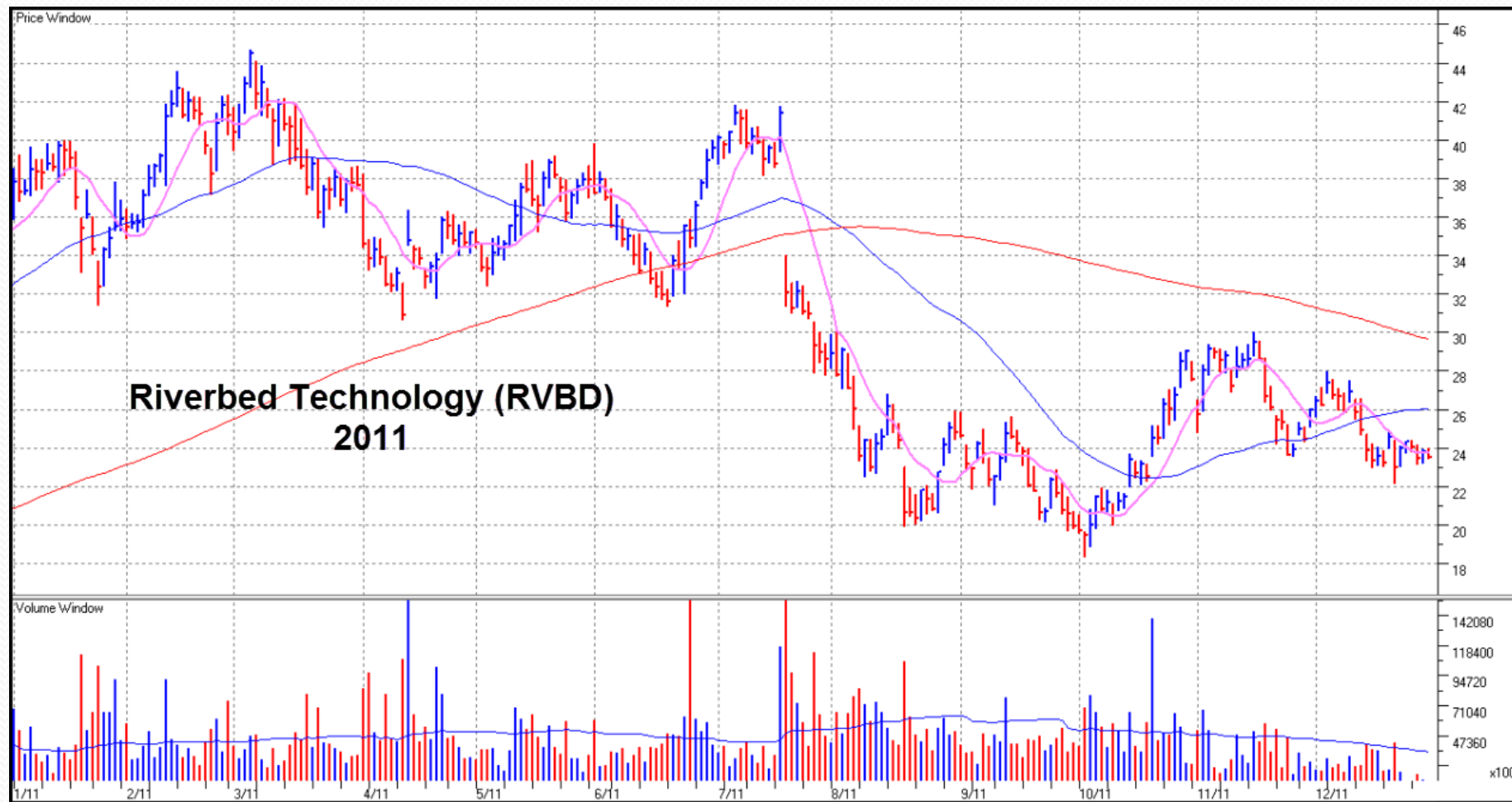




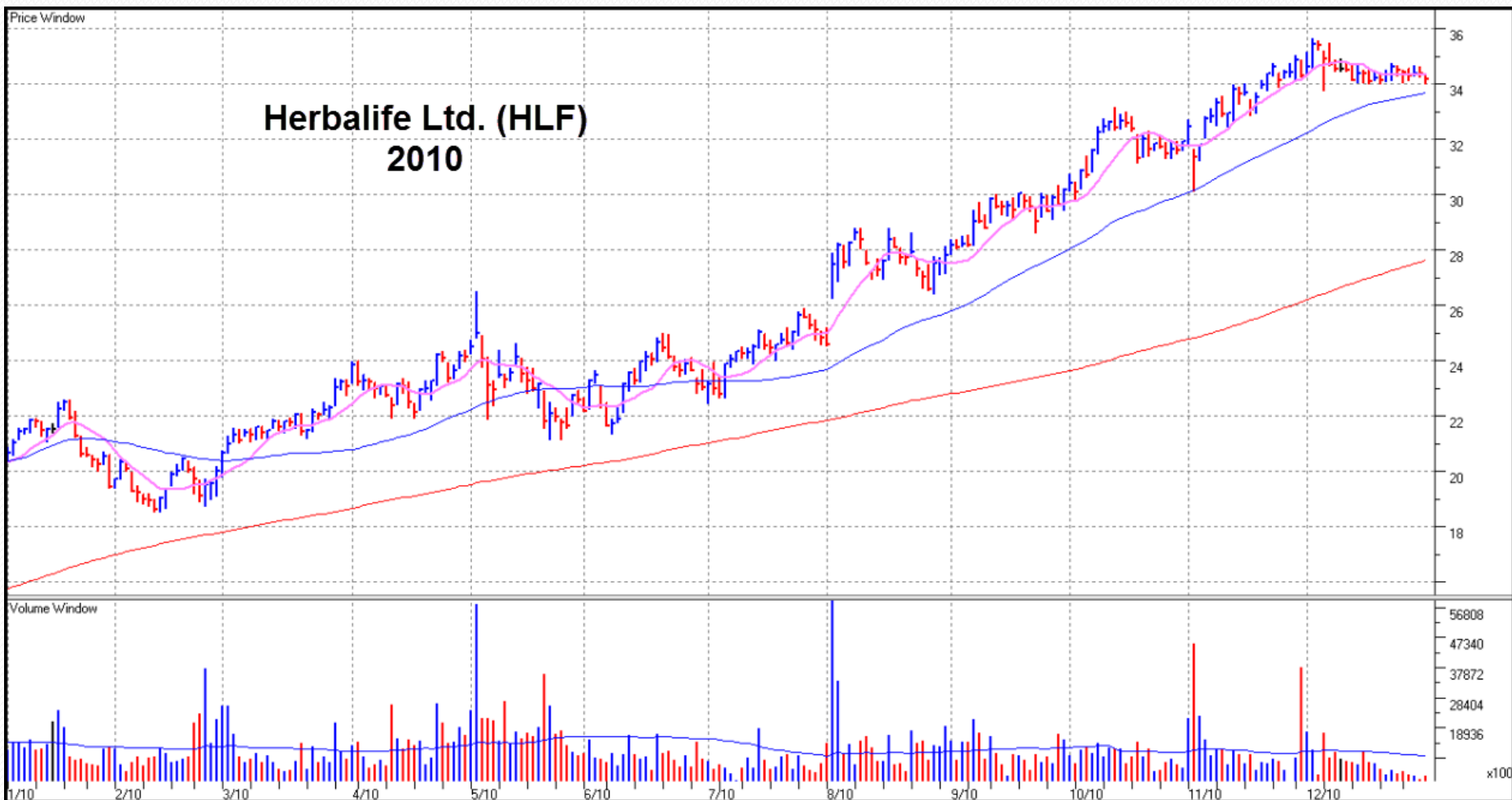
# Riverbed Technology (RVBD) 2010



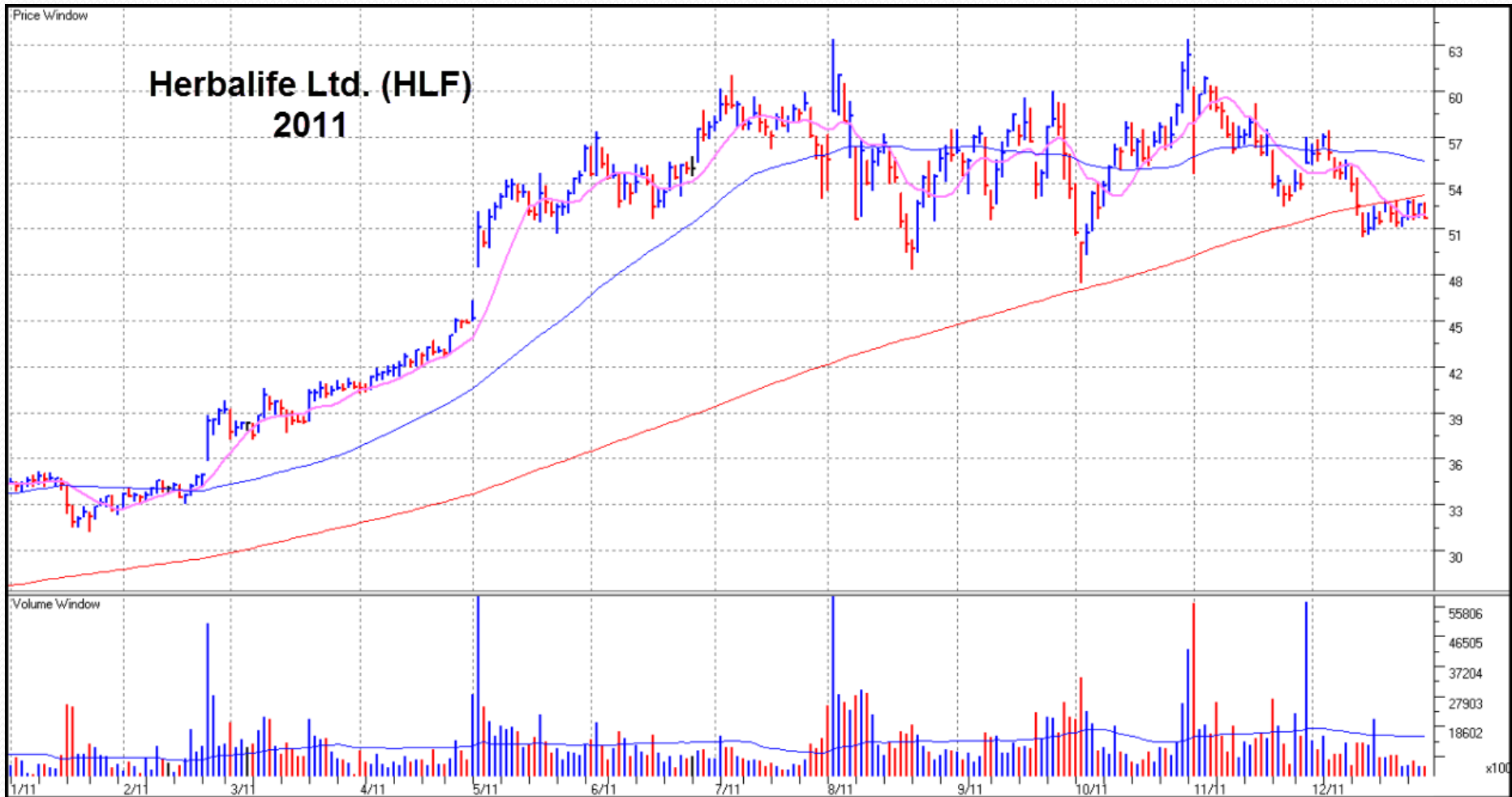


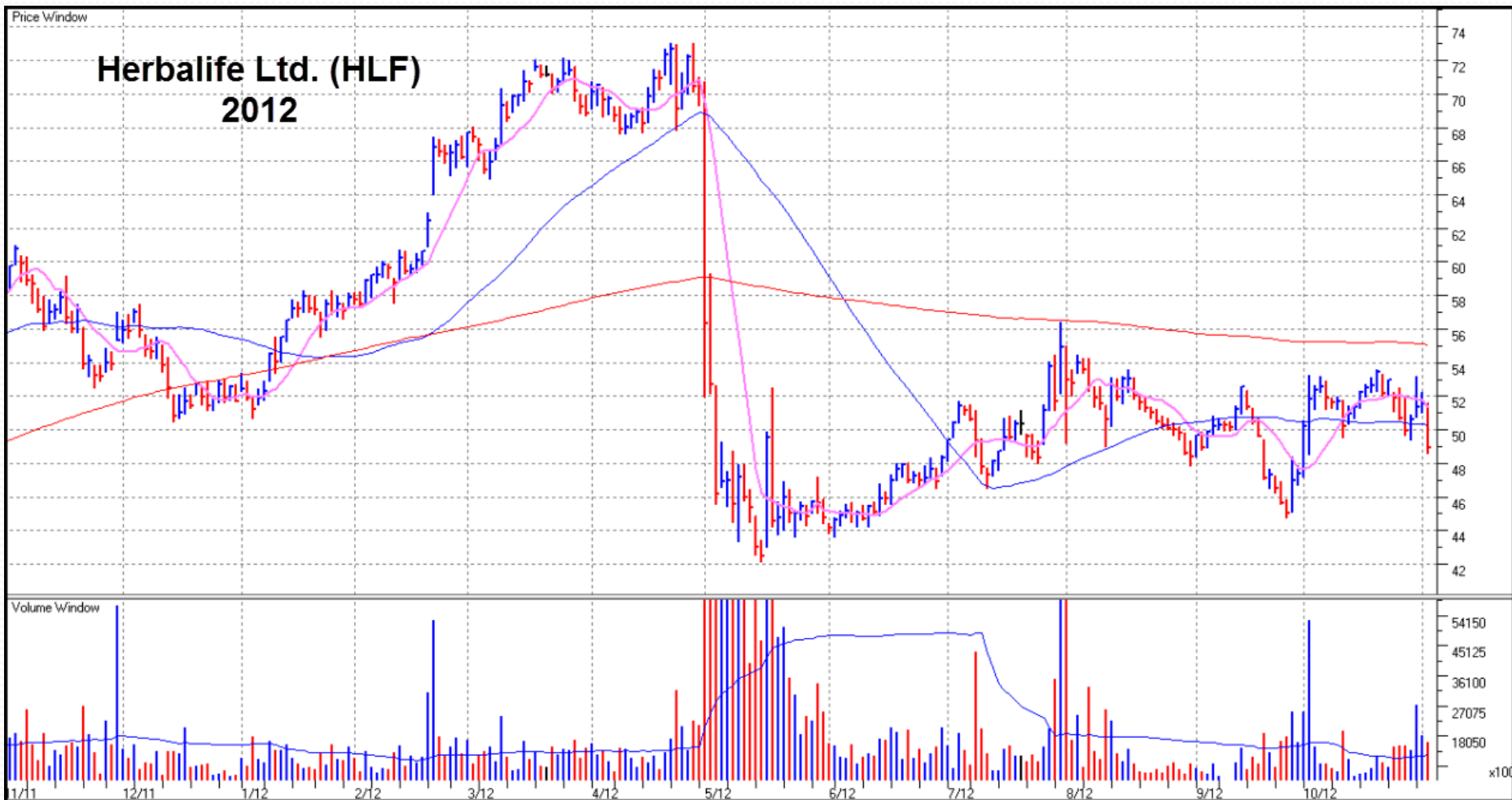


# Herbalife Ltd. (HLF) 2010

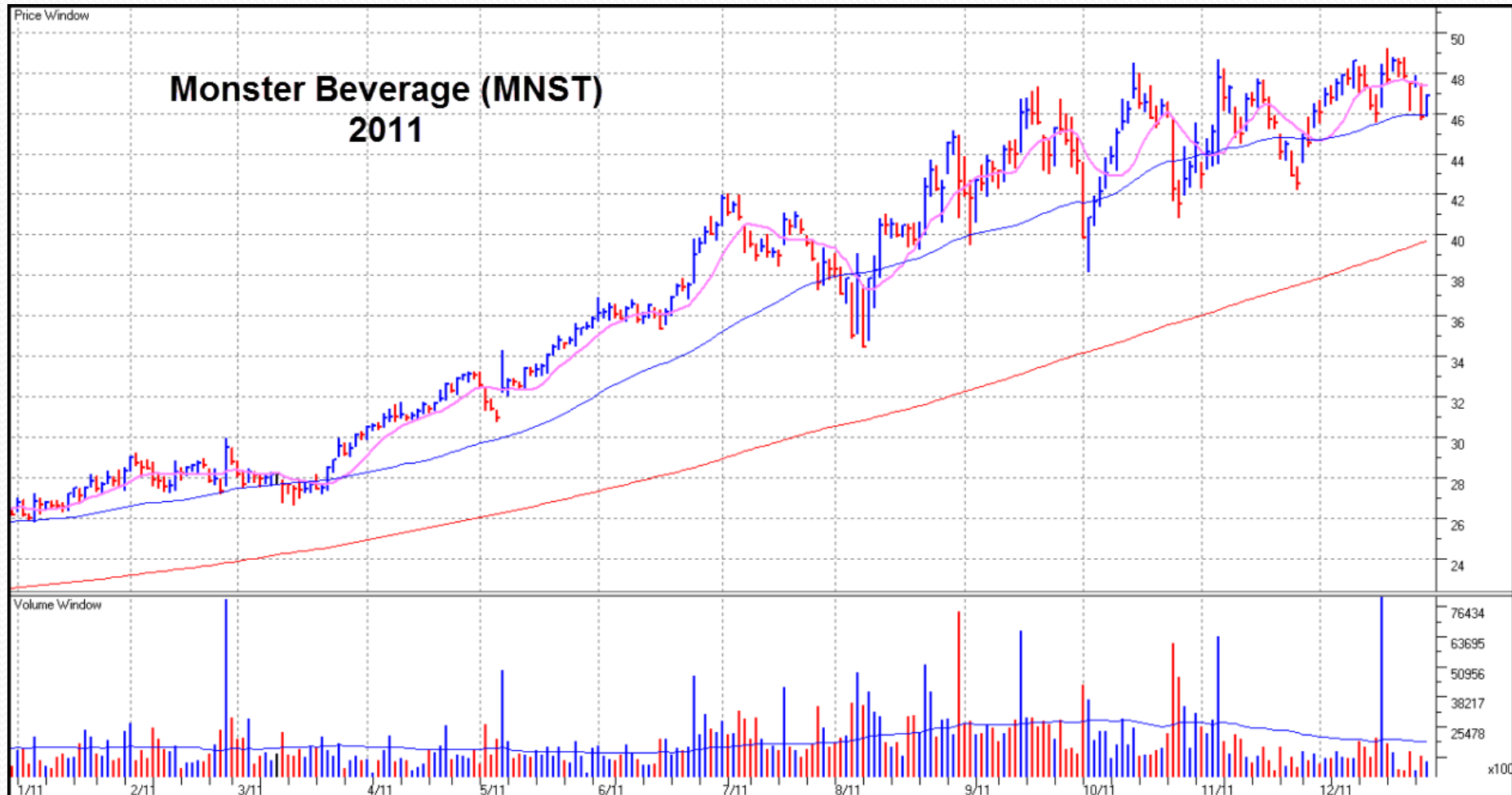


Herbalife Ltd. (HLF)  
2011

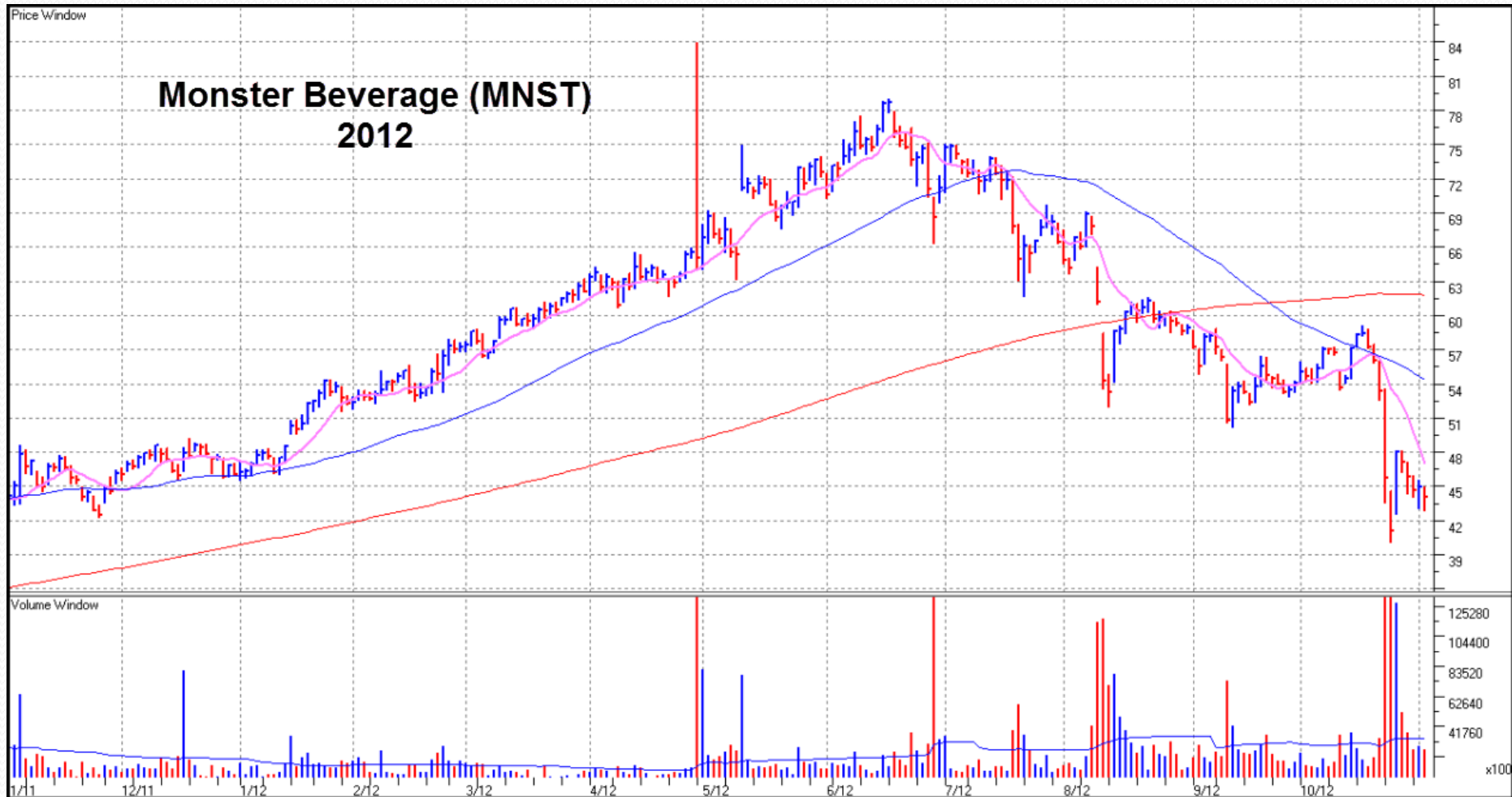


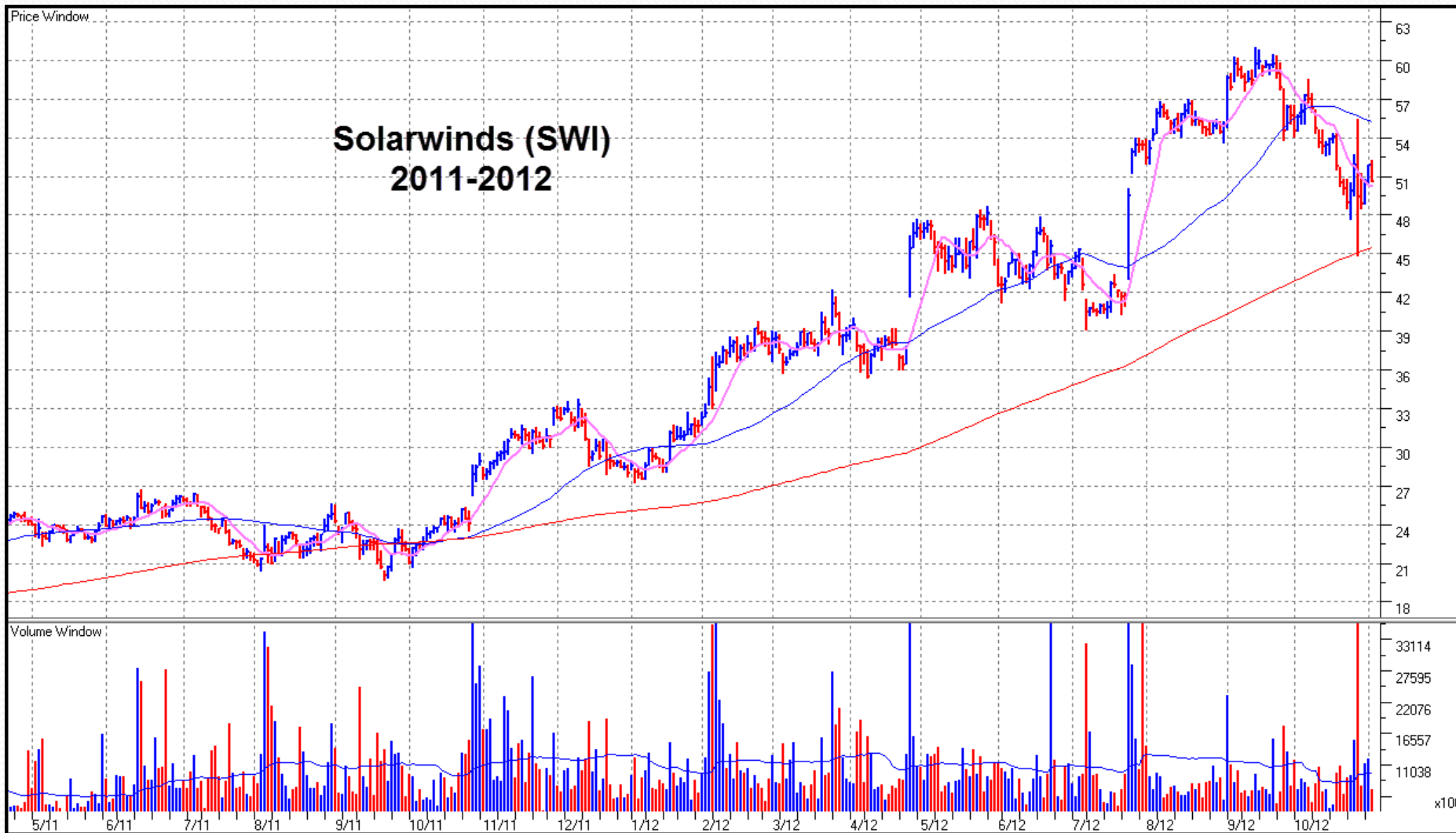


# Monster Beverage (MNST) 2011

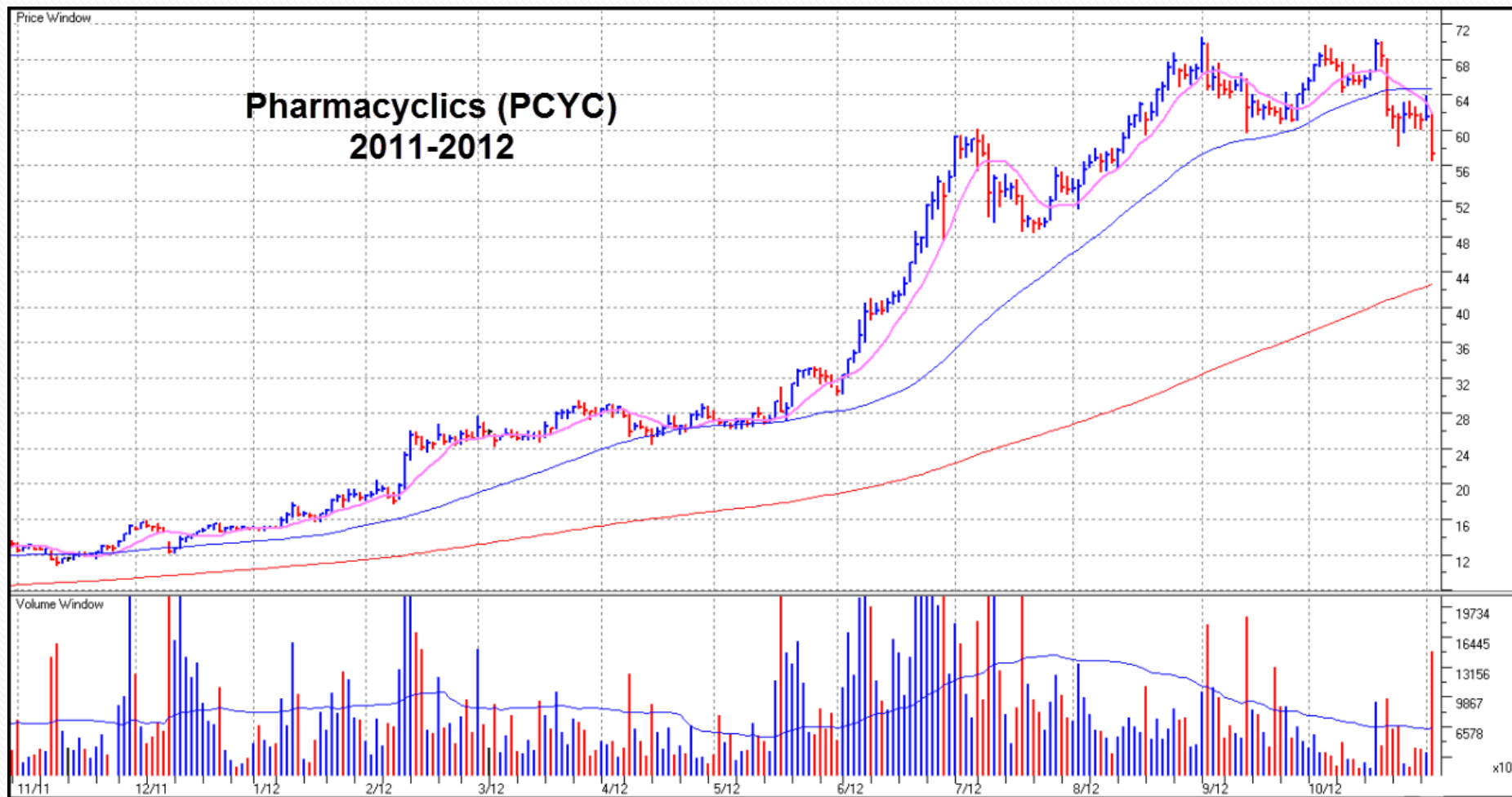


# Monster Beverage (MNST) 2012

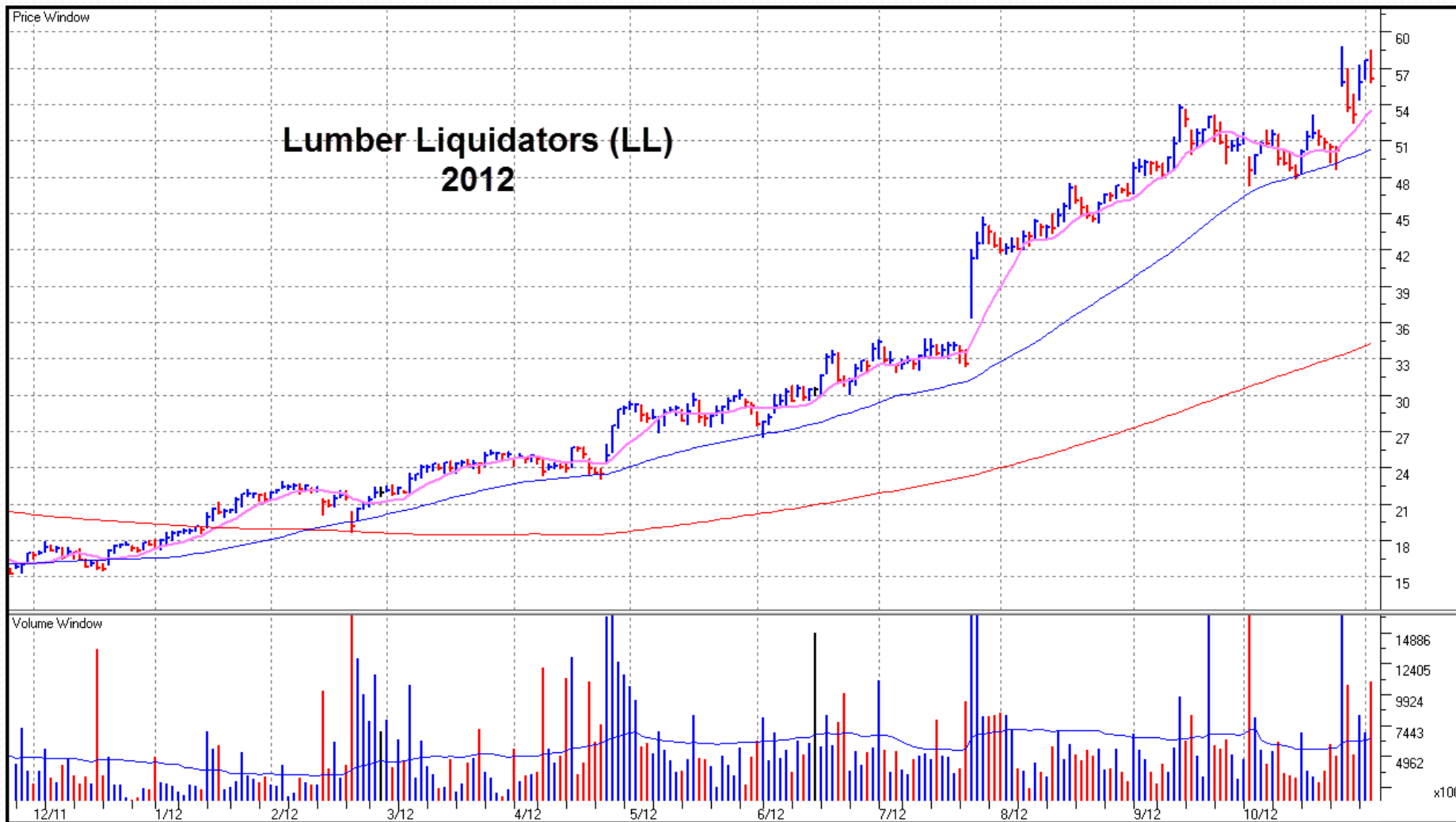


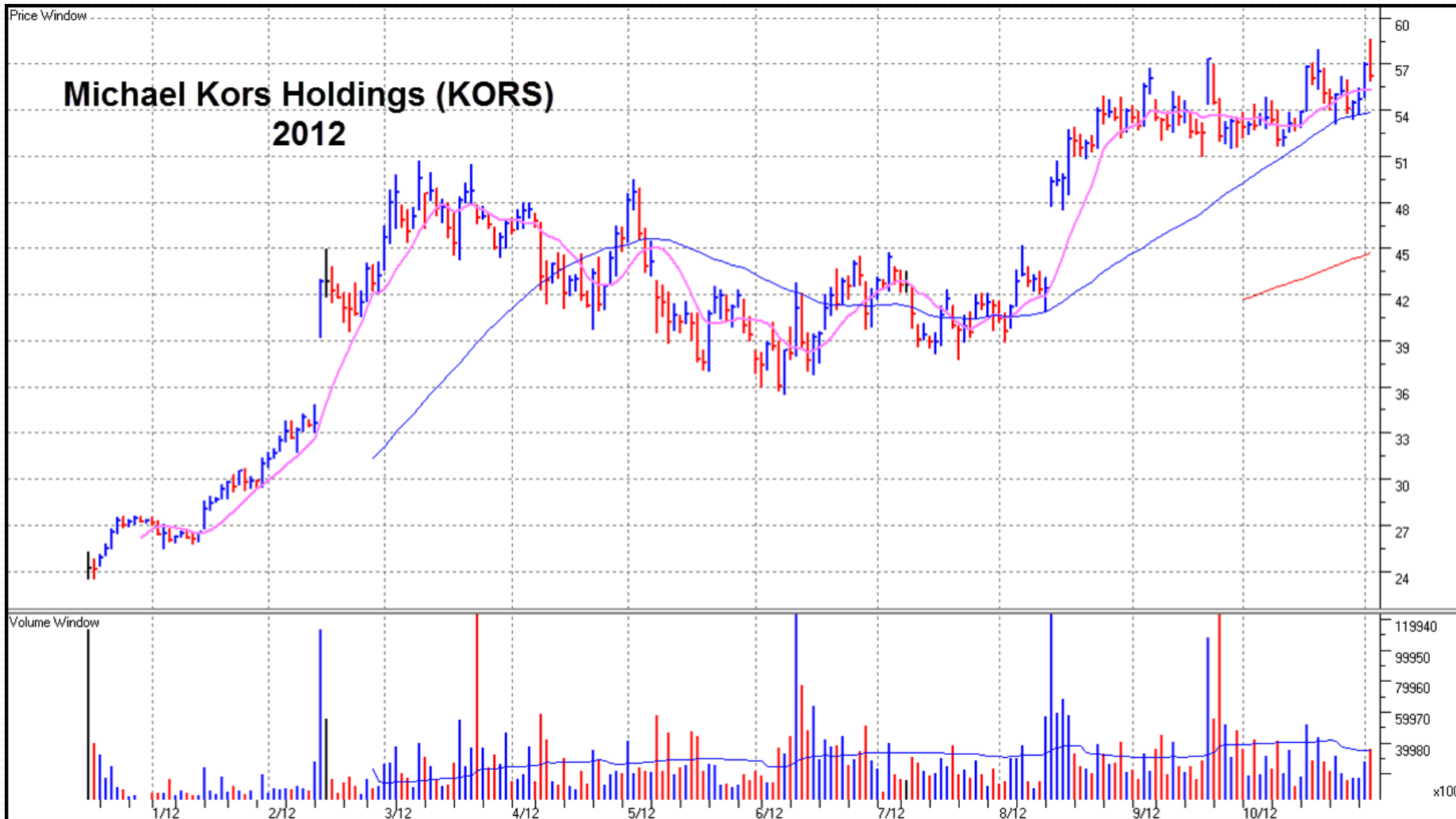


## Pharmacyclics (PCYC) 2011-2012

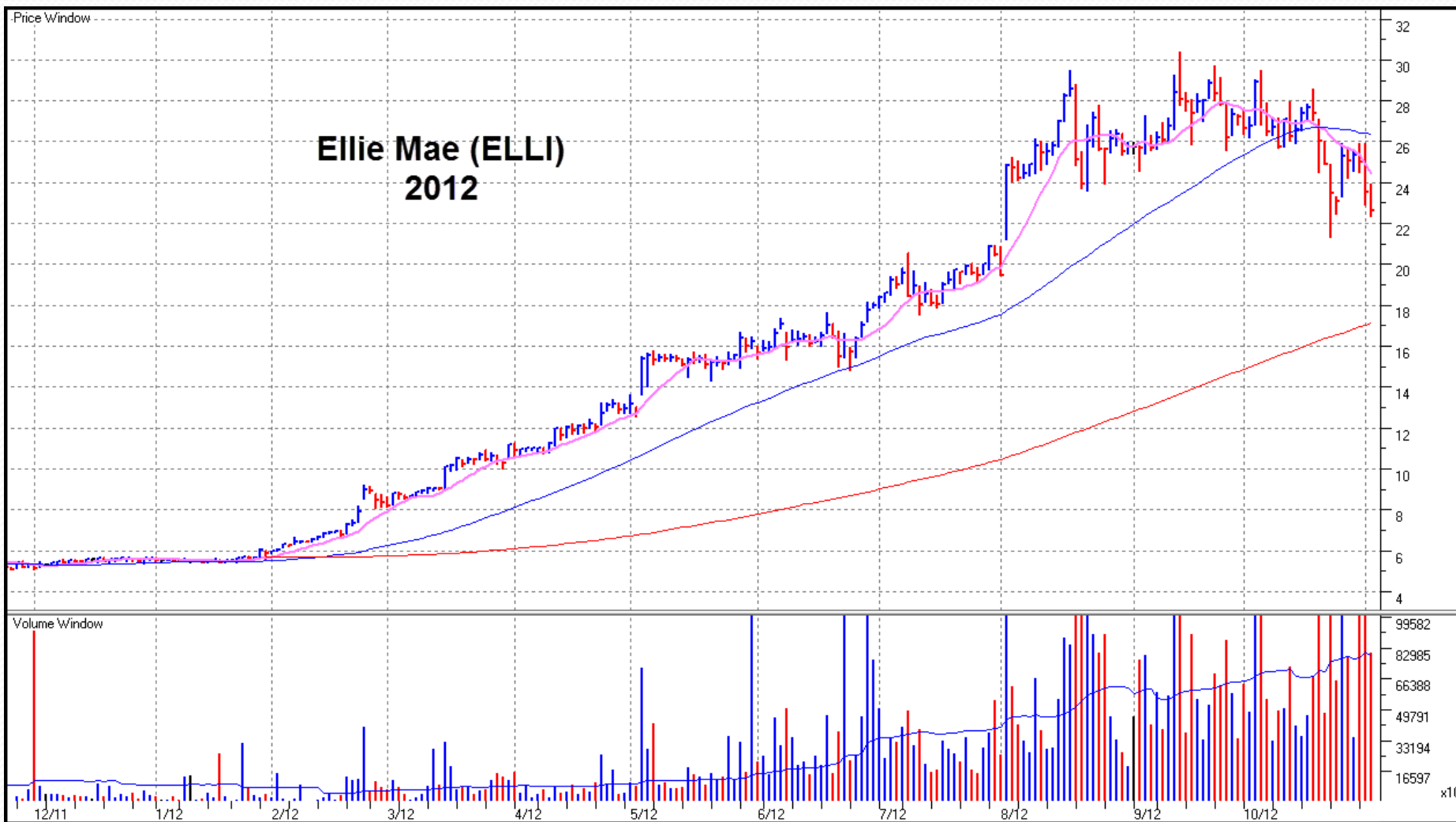




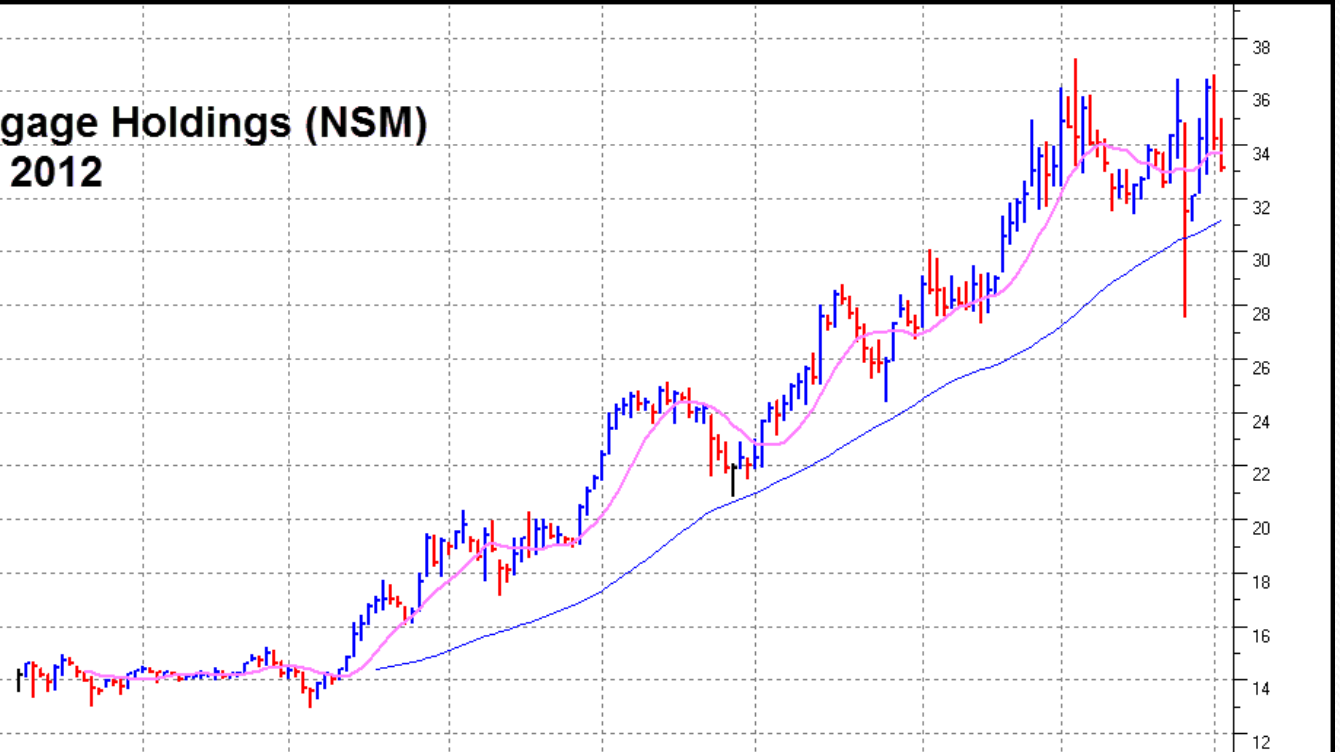




# Ellie Mae (ELLI) 2012



## Price Window



## Volume Window

